

Product datasheet for **TA396729S**

PGA5 Goat Polyclonal Antibody

Product data:

Product Type:	Primary Antibodies
Applications:	ELISA, IHC, WB
Recommended Dilution:	WB: 1:500 - 1:2,500 IHC: 1:250 - 1:1,250 ELISA: 1:2,000 - 1:10,000
Reactivity:	Porcine
Host:	Goat
Clonality:	Polyclonal
Immunogen:	Pepsin [Porcine Stomach]
Specificity:	Pepsin is an IgG fraction antibody purified from monospecific antiserum by a multi-step process which includes delipidation, salt fractionation and ion exchange chromatography followed by extensive dialysis against the buffer stated above. Assay by immunoelectrophoresis resulted in a single precipitin arc against anti-Peroxidase, anti-Goat Serum as well as purified and partially purified Pepsin [Porcine Stomach]. Cross reactivity against Pepsin from other tissues and species may occur but have not been specifically determined.
Formulation:	0.02 M Potassium Phosphate, 0.15 M Sodium Chloride, pH 7.2
Concentration:	1.0 mg/mL - lot specific
Conjugation:	HRP
Storage:	Store vial at -20° C or below prior to opening. This vial contains a relatively low volume of reagent (25 µL). To minimize loss of volume dilute 1:10 by adding 225 µL of the buffer stated above directly to the vial. Recap, mix thoroughly and briefly centrifuge to collect the volume at the bottom of the vial. Use this intermediate dilution when calculating final dilutions as recommended below. Store the vial at -20°C or below after dilution. Avoid cycles of freezing and thawing.
Stability:	Expiration date is one (1) year from date of receipt.
Database Link:	P00791



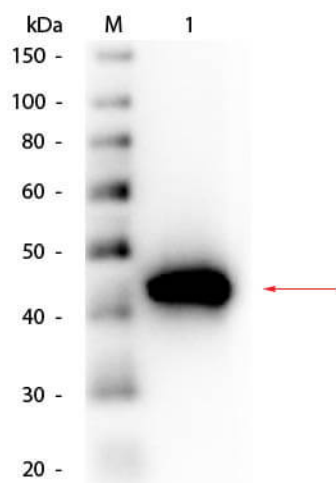
[View online »](#)

Background: Pepsin is one of three principal protein-degrading, or proteolytic, enzymes in the digestive system, the other two being chymotrypsin and trypsin. Pepsin is commonly used in the preparation produce either an Fab or an F(ab')₂ fragment from antibodies.

Synonyms: goat anti-Pepsin Antibody HRP Conjugated, Peroxidase Conjugated goat anti-Pepsin Antibody, Pepsin A antibody, Pepsin a precursor antibody, Pepsin antibody, Pepsinogen 1 second locus antibody, Pepsinogen 3 group 1 antibody, Pepsinogen a3 antibody

Note: Anti-Pepsin peroxidase has been tested by ELISA, dot blot, and western blot and is useful in immunohistochemistry. Optimal titers should be obtained by researchers if not provided.

Product images:



Western Blot of Goat anti-Pepsin Antibody Peroxidase Conjugated. Lane 1: Pepsin. Load: 50 ng per lane. Primary antibody: Goat anti-Pepsin Antibody Peroxidase Conjugated at 1:1,000 overnight at 4°C. Secondary antibody: n/a Block: MB-070 for 30 min at RT. Predicted/Observed size: 41 kDa, 41 kDa for Pepsin.