

Product datasheet for **TA396728S**

PPI Goat Polyclonal Antibody

Product data:

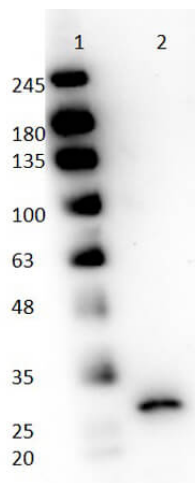
Product Type:	Primary Antibodies
Applications:	ELISA, IHC, WB
Recommended Dilution:	WB: 1:500- 1:2,500 IHC: 1:200- 1:1,000 ELISA: 1:1,000 - 1:5,000
Reactivity:	Carica papaya
Host:	Goat
Clonality:	Polyclonal
Immunogen:	Anti-Papain Antibody was produced by repeated immunizations with pork Papain protein isolated from papaya.
Specificity:	Anti-Papain is an IgG fraction antibody purified from monospecific antiserum by a multi-step process which includes delipidation, salt fractionation and ion exchange chromatography followed by extensive dialysis against the buffer stated above. Assay by immunoelectrophoresis resulted in a single precipitin arc against anti-Peroxidase, anti-Goat Serum as well as purified and partially purified Papain [Carica papaya]. Cross reactivity against Papain from other sources may occur but has not been specifically determined.
Formulation:	0.02 M Potassium Phosphate, 0.15 M Sodium Chloride, pH 7.2
Concentration:	1.0 mg/mL - lot specific
Conjugation:	HRP
Storage:	Store vial at -20° C or below prior to opening. This vial contains a relatively low volume of reagent (25 µL). To minimize loss of volume dilute 1:10 by adding 225 µL of the buffer stated above directly to the vial. Recap, mix thoroughly and briefly centrifuge to collect the volume at the bottom of the vial. Use this intermediate dilution when calculating final dilutions as recommended below. Store the vial at -20°C or below after dilution. Avoid cycles of freezing and thawing.
Stability:	Expiration date is one (1) year from date of receipt.
Database Link:	P00784



[View online »](#)

- Background:** Papain Antibody detects Papain protein from papaya. Papain belongs to the peptidase C1 family and hydrolyses proteins with broad specificity for peptide bonds. The proteolysis preference of Papain is at amino acids bearing a large hydrophobic side chain at the P2 position and is inhibited when Val is at position P1. Papain may cause allergic reactions in humans. Anti-Papain Antibody is ideal for investigators involved in Cell Signaling and Cell Biology research.
- Synonyms:** goat anti-Papain Antibody HRP Conjugated, Peroxidase Conjugated goat anti-Papain Antibody, Allergen Car p 1 antibody, Papaya proteinase I antibody, PPI antibody
- Note:** Anti-Papain peroxidase antibody has been tested by ELISA, dot blot, and western blot. This product is assayed against 1.0 ug of Papain [*Carica papaya*] in a standard capture ELISA using ABTS (2,2'-azino-bis-[3-ethylbenthiazoline-6-sulfonic acid]) as a substrate for 30 minutes at room temperature. A working dilution of 1:1,000 to 1:4,000 of the reconstitution concentration is suggested for this product. Researchers should determine optimal titers for applications that are not stated below.

Product images:



Western Blot of Goat anti-Papain Antibody Peroxidase Conjugated. Lane 1: Opal Prestained Molecular Weight Marker (p/n MB-210-0500). Lane 2: Papain. Load: 50 ng per lane. Primary antibody: Goat anti-Papain Antibody Peroxidase Conjugated at 1:1,000 overnight at 4°C. Secondary antibody: none. Block: MB-070 for 30 min at RT. Predicted/Observed size: 23.4 kDa, >25 kDa for Papain.