

Product datasheet for **TA396727S**

LDHA Goat Polyclonal Antibody

Product data:

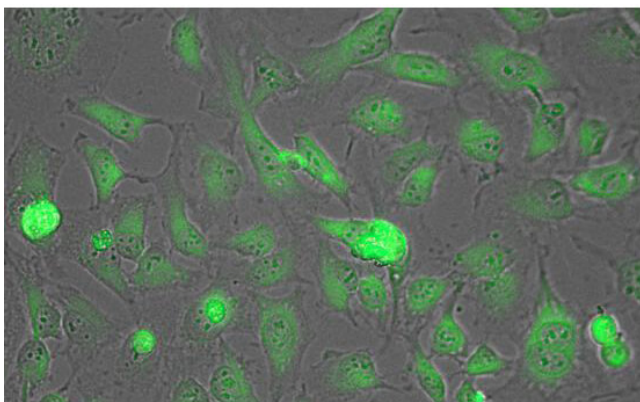
Product Type:	Primary Antibodies
Applications:	ELISA, IHC, IP, WB
Recommended Dilution:	WB: 1:1,000 - 1:6,000 IHC: 1:500 - 1:2,500 ELISA: 1:3,000
Reactivity:	Rabbit
Host:	Goat
Clonality:	Polyclonal
Immunogen:	Anti-Lactate Dehydrogenase Antibody was produced by repeated immunizations with rabbit muscle Lactate Dehydrogenase full length protein.
Specificity:	Anti-Lactate Dehydrogenase Antibody is an IgG fraction antibody purified from monospecific antiserum by a multi-step process which includes delipidation, salt fractionation and ion exchange chromatography followed by extensive dialysis against the buffer stated above. Assay by immunoelectrophoresis resulted in a single precipitin arc against anti-Peroxidase, anti-Goat Serum as well as purified and partially purified Lactate Dehydrogenase [Rabbit Muscle]. Cross reactivity against Lactate Dehydrogenase from other tissues and species may occur but have not been specifically determined.
Formulation:	0.02 M Potassium Phosphate, 0.15 M Sodium Chloride, pH 7.2
Concentration:	1.0 mg/mL - lot specific
Conjugation:	HRP
Storage:	Store vial at -20° C or below prior to opening. This vial contains a relatively low volume of reagent (25 µL). To minimize loss of volume dilute 1:10 by adding 225 µL of the buffer stated above directly to the vial. Recap, mix thoroughly and briefly centrifuge to collect the volume at the bottom of the vial. Use this intermediate dilution when calculating final dilutions as recommended below. Store the vial at -20°C or below after dilution. Avoid cycles of freezing and thawing.
Stability:	Expiration date is one (1) year from date of receipt.
Database Link:	Entrez Gene 100009107 Rabbit P13491



[View online »](#)

- Background:** Anti-Lactate Dehydrogenase Antibody detects Lactate Dehydrogenase. Lactate dehydrogenases exist in four distinct enzyme classes. Two of them are cytochrome c-dependent enzymes, each acting on either D-lactate or L-lactate. The other two are NAD(P)-dependent enzymes, each acting on either D-lactate or L-lactate. Lactate dehydrogenase catalyzes the interconversion of pyruvate and lactate. Anti-Lactate Dehydrogenase Antibody is ideal for investigators involved in Cell Signaling, Immunology, Neuroscience and Signal Transduction research.
- Synonyms:** goat anti-Lactate Dehydrogenase Antibody HRP Conjugation, Peroxidase Conjugated goat anti-Lactate Dehydrogenase Antibody, L-lactate dehydrogenase A chain, LDH-A, LDH muscle subunit, LDH-M
- Note:** Anti-Lactate Dehydrogenase peroxidase Antibody has been tested in ELISA, western blot, and immunofluorescence. This product is suitable for IP and IHC. Researchers should determine optimal titers for applications that are not stated below.

Product images:



Immunofluorescence Microscopy of Biotin conjugated Anti-Lactate Dehydrogenase Antibody. Tissue: HeLa cells. Fixation: fixed for 5 min in 1:1 MeTOH:Acetone, blocked with MB-071 (preservative free) for 15 min. Antigen retrieval: not required. Primary antibody: Lactate Dehydrogenase antibody at 1:200 for 1 h at RT. Secondary antibody: DyLight 488 conjugated Streptavidin antibody at 1:10,000 for 30 min at RT. Staining: Lactate Dehydrogenase as green fluorescent signal.