

Product datasheet for **TA396721S**

gox Goat Polyclonal Antibody

Product data:

Product Type:	Primary Antibodies
Applications:	ELISA, IHC, WB
Recommended Dilution:	WB: 1:1,000 - 1:5,000 IHC: User Optimized ELISA: 1:4,000 - 1:20,000
Reactivity:	Aspergillus niger
Host:	Goat
Clonality:	Polyclonal
Immunogen:	Glucose Oxidase [Aspergillus niger]
Specificity:	Glucose Oxidase is an IgG fraction antibody purified from monospecific antiserum by a multi-step process which includes delipidation, salt fractionation and ion exchange chromatography followed by extensive dialysis against the buffer stated above. Assay by immunoelectrophoresis resulted in a single precipitin arc against anti-Peroxidase, anti-Goat Serum as well as purified and partially purified Glucose Oxidase [Aspergillus niger]. Cross reactivity against Glucose Oxidase from other tissues and species may occur but has not been specifically determined.
Formulation:	0.02 M Potassium Phosphate, 0.15 M Sodium Chloride, pH 7.2
Concentration:	1 mg/mL - lot specific
Conjugation:	HRP
Storage:	Store vial at -20° C or below prior to opening. This vial contains a relatively low volume of reagent (25 µL). To minimize loss of volume dilute 1:10 by adding 225 µL of the buffer stated above directly to the vial. Recap, mix thoroughly and briefly centrifuge to collect the volume at the bottom of the vial. Use this intermediate dilution when calculating final dilutions as recommended below. Store the vial at -20°C or below after dilution. Avoid cycles of freezing and thawing.
Stability:	Expiration date is one (1) year from date of receipt.
Database Link:	P13006



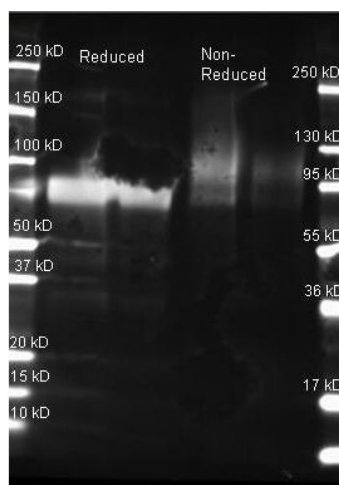
[View online »](#)

Background: Glucose Oxidase is an oxido-reductase that catalyzes the oxidation of glucose to hydrogen peroxide and D-glucono- δ -lactone. In cells, it aids in breaking the sugar down into its metabolites, used for the determination of free glucose in body fluids, and has many applications in biotechnologies.

Synonyms: goat anti-Glucose Oxidase Antibody HRP Conjugation, Peroxidase Conjugated goat anti-Glucose Oxidase Antibody, Beta D Glucose Oxygen 1 Oxido Reductase antibody, Glucose oxidase (Precursor) antibody, Glucose Oxyhydrase antibody, GOD antibody

Note: Anti-Glucose Oxidase is useful in ELISA, western blot, and immunohistochemistry. Optimal titers should be reached by researchers.

Product images:



Rockland Goat anti Glucose Oxidase antibody was used to detect Glucose Oxidase under reducing and non-reducing conditions. Reduced samples of purified Glucose Oxidase contained 4% BME and were boiled for 5 minutes. Samples of ~1 and 0.25 ug of protein per lane were run by SDS-PAGE. Protein was transferred to nitrocellulose and probed with Rockland Goat anti Glucose Oxidase antibody (200-1137 lot 165 1:5K in MB-0070, ON 4 C). Primary antibody was detected with Rockland Dylight 649 conjugated Donkey anti Goat (605-743-125 lot 20834 1:10K 1.5 hr RT in MB-070 and imaged on the BioRad VersaDoc imaging system