

## Product datasheet for **TA396717S**

### PGA5 Goat Polyclonal Antibody

#### Product data:

Product Type:	Primary Antibodies
Applications:	ELISA, IHC, IP, WB
Recommended Dilution:	<b>WB:</b> 1:5,000 - 1:20,000 <b>IHC:</b> 1:2,000 - 1:10,000 <b>ELISA:</b> 1:50:000 - 1:200,000
Reactivity:	Porcine
Host:	Goat
Clonality:	Polyclonal
Immunogen:	Anti-Pepsin Antibody was produced by repeated immunizations with pork Pepsin protein isolated from swine stomach.
Specificity:	Anti-PEPSIN is an IgG fraction antibody purified from monospecific antiserum by a multi-step process which includes delipidation, salt fractionation and ion exchange chromatography followed by extensive dialysis against the buffer stated above. Assay by immunoelectrophoresis resulted in a single precipitin arc against anti-Goat Serum as well as purified and partially purified Pepsin [Porcine Stomach]. Cross reactivity against Pepsin from other tissues and species may occur but have not been specifically determined.
Formulation:	0.02 M Potassium Phosphate, 0.15 M Sodium Chloride, pH 7.2
Concentration:	1.0 mg/ml - lot specific
Conjugation:	Unconjugated
Storage:	Store vial at -20° C or below prior to opening. This vial contains a relatively low volume of reagent (25 µL). To minimize loss of volume dilute 1:10 by adding 225 µL of the buffer stated above directly to the vial. Recap, mix thoroughly and briefly centrifuge to collect the volume at the bottom of the vial. Use this intermediate dilution when calculating final dilutions as recommended below. Store the vial at -20°C or below after dilution. Avoid cycles of freezing and thawing.
Stability:	Expiration date is one (1) year from date of receipt.
Database Link:	<a href="#">P00791</a>



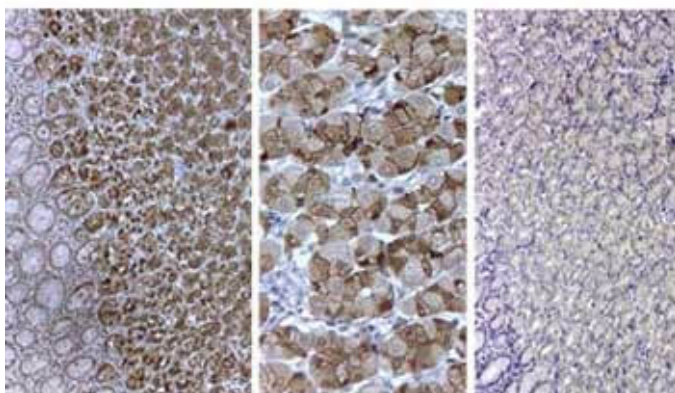
[View online »](#)

**Background:** Pepsin antibody detects Pepsin protein. Pepsin is an enzyme whose pepsinogen is released by the chief cells in the stomach and degrades food proteins into peptides. Pepsin belongs to the peptidase A1 family and is one of three principal proteolytic enzymes in the digestive system. Pepsin is most efficient in cleaving peptide bonds between hydrophobic and preferably aromatic amino acids such as phenylalanine, tryptophan, and tyrosine at positions P1 and P1'. Anti-Pepsin Antibody is ideal for investigators involved in Cell Signaling and Cell Biology research.

**Synonyms:** goat anti-Pepsin Antibody, Pepsin A antibody, Pepsin a precursor antibody, Pepsin antibody, Pepsinogen 1 second locus antibody, Pepsinogen 3 group 1 antibody, Pepsinogen a3 antibody

**Note:** Anti-Pepsin antibody has been tested in ELISA, western blot and immunohistochemistry. This product detects a single band of the expected apparent molecular weight and for ELISA. Researchers should determine optimal titers for applications that are not stated below.

### Product images:



Immunohistochemistry of goat anti-pepsin antibody. Antigen Retrieval: HIER pH6.2 10X. Primary Antibody: Goat Anti-Pepsin 1 hr 1:100. Secondary Antibody: Swine anti-goat HRP 45 min followed by Staining with DAB. Staining: Gastric mucosa (containing fundic gland with zymogenic cells) homogeneous positivity in the secretory granules of glandular chief cells and in secretory granules of neck cells (Shown Left and Center) negative control with normal rabbit IgG (Shown right).