

Product datasheet for **TA396710S**

ALDOA Goat Polyclonal Antibody

Product data:

Product Type:	Primary Antibodies
Applications:	ELISA, IP, WB
Recommended Dilution:	WB: 1:1,000 - 1:5,000 ELISA: 1:7,000
Reactivity:	Human, Rabbit
Host:	Goat
Clonality:	Polyclonal
Immunogen:	Aldolase [Rabbit Muscle]
Specificity:	Anti-ALDOLASE was prepared from monospecific antiserum by a delipidation, salt fractionation and ion exchange chromatography. Assay by immunoelectrophoresis resulted in a single precipitin arc against anti-Goat Serum, purified and partially purified Aldolase [Rabbit Muscle].
Formulation:	0.02 M Potassium Phosphate, 0.15 M Sodium Chloride, pH 7.2
Concentration:	1 mg/ml - lot specific
Conjugation:	Unconjugated
Storage:	Store vial at -20° C or below prior to opening. This vial contains a relatively low volume of reagent (25 µL). To minimize loss of volume dilute 1:10 by adding 225 µL of the buffer stated above directly to the vial. Recap, mix thoroughly and briefly centrifuge to collect the volume at the bottom of the vial. Use this intermediate dilution when calculating final dilutions as recommended below. Store the vial at -20°C or below after dilution. Avoid cycles of freezing and thawing.
Stability:	Expiration date is one (1) year from date of receipt.
Database Link:	Entrez Gene 100009055 Rabbit P00883
Background:	Aldolase plays a key role in glycolysis and gluconeogenesis. In addition, it may also function as scaffolding protein. In vertebrates, three forms of this ubiquitous glycolytic enzyme are found, aldolase A in muscle, aldolase B in the liver, and aldolase C in the brain. Alkylation of Arg-43 inactivates the enzyme. Aldolase is involved in step 4 of the subpathway that synthesizes D-glyceraldehyde 3-phosphate and glyceralone phosphate from D-glucose.

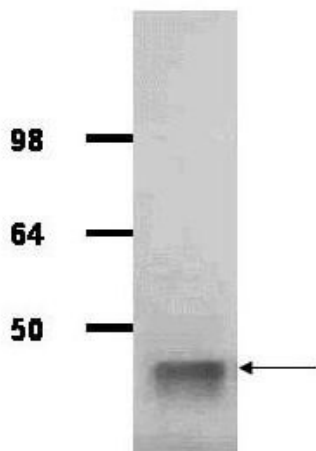


[View online »](#)

Synonyms: goat anti-Aldolase Antibody, Fructose-bisphosphate aldolase A, Muscle-type aldolase

Note: Anti-Aldolase Antibody has been tested by ELISA, immunoprecipitation, and western blot. This product is assayed against 1.0 µg of Aldolase [Rabbit Muscle] in a standard ELISA using Peroxidase conjugated Affinity Purified anti-Goat IgG [H&L] (Rabbit) code #605-4302 and (ABTS (2,2'-azino-bis-[3-ethylbenthiazoline-6-sulfonic acid])) code # ABTS-100 as a substrate for 30 minutes at room temperature. A working dilution of 1:10,000 to 1:40,000 is suggested for this product. Use approximately 5 µl of antibody to immunoprecipitate 50 µl of protein lysate.

Product images:



IgG purified antibody to rabbit muscle aldolase (100-1141, 200-1141 and 200-1341) was used at a 1:1000 dilution to detect human aldolase by Western blot. A whole cell lysate prepared from human derived A293 cells was loaded on a 4-12% tris glycine gradient gel for SDS-PAGE. The gel was transferred to nitrocellulose using standard techniques. Antibody reaction with the membrane occurred overnight at 4° C in TTBS supplemented with 2% non-fat dry milk. Color was allowed to develop using SuperSignal West Pico Chemiluminescent Substrate (PIERCE). Other detection methods will yield similar results. This antibody clearly detects a band at ~41 kDa consistent with human aldolase.