

Product datasheet for TA396707

Goat Polyclonal Antibody

Product data:

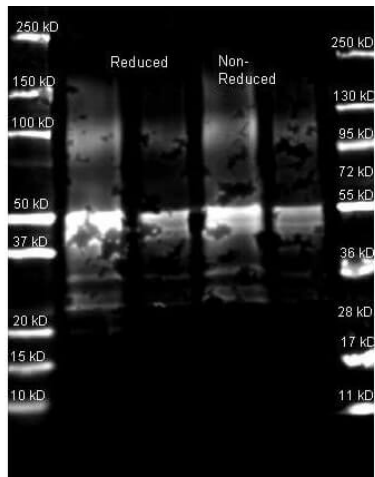
Product Type:	Primary Antibodies
Applications:	FC, IF
Recommended Dilution:	IF: 1:500 - 1:2,500 FC: User Optimized
Host:	Goat
Clonality:	Polyclonal
Immunogen:	Protein A [Staphylococcus aureus]
Specificity:	Anti-Protein A is an IgG fraction antibody purified from monospecific antiserum by a multi-step process which includes delipidation, salt fractionation and ion exchange chromatography followed by extensive dialysis against the buffer stated above. Assay by immunoelectrophoresis resulted in a single precipitin arc against purified and partially purified Protein A [Staphylococcus aureus], anti-Goat IgG and anti-Goat Serum. Cross reactivity against Protein A from other sources is unknown.
Formulation:	0.02 M Potassium Phosphate, 0.15 M Sodium Chloride, pH 7.2
Reconstitution Method:	Restore with deionized water (or equivalent) - Reconstitution Volume: 100 µL
Concentration:	1.0 mg/mL - lot specific
Conjugation:	Texas Red
Storage:	Store vial at -20° C or below prior to opening. This vial contains a relatively low volume of reagent (25 µL). To minimize loss of volume dilute 1:10 by adding 225 µL of the buffer stated above directly to the vial. Recap, mix thoroughly and briefly centrifuge to collect the volume at the bottom of the vial. Use this intermediate dilution when calculating final dilutions as recommended below. Store the vial at -20°C or below after dilution. Avoid cycles of freezing and thawing.
Stability:	Expiration date is one (1) year from date of receipt.
Background:	Protein A is 56 kDA surface protein found in the cell wall of Staphylococcus aureus. Protein A has a high affinity to Human IgG, Mouse IgG and others and is therefore suitable for purification and detection of immunoglobulins.
Synonyms:	goat anti-Protein A Antibody, Texas Red™ Conjugated goat anti-Protein A Antibody, Protein A Texas Red™, Texas Red™, Protein A Texas Red™ Antibody



[View online »](#)

Note: Anti-Protein A Texas Red Conjugated Antibody is suitable for immunomicroscopy and flow cytometry or FACS analysis as well as other antibody based fluorescent assays requiring lot-to-lot consistency.

Product images:



Western Blot of Goat anti-Protein A Antibody. Lane 1: Protein A Reduced. Lane 2: Protein A Reduced. Lane 3: Protein A Non-Reduced. Lane 4: Protein A Non-Reduced. Load: Lane 1 and 3 - 1.0 μ g per lane, Lane 2 and 4 - 0.25 μ g per lane. Primary antibody: Protein A antibody at 1:5,000 for overnight at 4°C. Secondary antibody: DyLight™ 649 goat secondary antibody at 1:10,000 for 90 min at RT. Block: 5% BLOTTO overnight at 4°C. Predicted/Observed size: ~50 kDa for Protein A. Other band(s): Protein A splice variants and isoforms.