

## Product datasheet for **TA396703S**

### pgmB Goat Polyclonal Antibody

#### Product data:

Product Type:	Primary Antibodies
Applications:	WB
Recommended Dilution:	<b>WB:</b> 1:200 - 1:1,000
Reactivity:	Lactococcus lacti
Host:	Goat
Clonality:	Polyclonal
Immunogen:	beta Phosphoglucomutase [Lactococcus lacti]
Specificity:	Anti-Beta-Phosphoglucomutase is an IgG fraction antibody purified from monospecific antiserum by a multi-step process which includes delipidation, salt fractionation and ion exchange chromatography followed by extensive dialysis against the buffer stated above. Assay by immunoelectrophoresis resulted in a single precipitin arc against anti-Biotin, anti-Goat Serum as well as purified and partially purified Beta-Phosphoglucomutase [Lactococcus lacti]. Cross reactivity against Beta-Phosphoglucomutase from other sources is unknown.
Formulation:	0.02 M Potassium Phosphate, 0.15 M Sodium Chloride, pH 7.2
Concentration:	1.0 mg/mL - lot specific
Conjugation:	Biotin
Storage:	Store vial at -20° C or below prior to opening. This vial contains a relatively low volume of reagent (25 µL). To minimize loss of volume dilute 1:10 by adding 225 µL of the buffer stated above directly to the vial. Recap, mix thoroughly and briefly centrifuge to collect the volume at the bottom of the vial. Use this intermediate dilution when calculating final dilutions as recommended below. Store the vial at -20°C or below after dilution. Avoid cycles of freezing and thawing.
Stability:	Expiration date is one (1) year from date of receipt.
Database Link:	<a href="#">P71447</a>



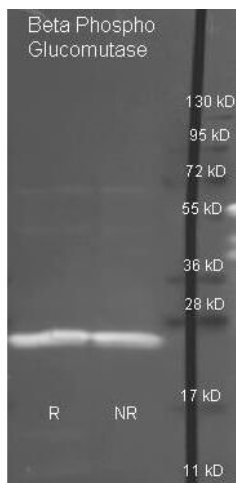
[View online »](#)

**Background:** Anti-Beta-Phosphoglucomutase antibody is located in the cytoplasm, working to catalyze the transference of a phosphoryl group on a glucose or lactose monomer from the 1' to the 6' position in the forward direction or 6' to the 1' position in the reverse direction. Anti-Beta-Phosphoglucomutase is essential to regulating the flow of carbohydrate intermediates in glycolysis as well as the formation of the sugar nucleotide UDP-glucose. Part of the HAD-like hydrolase superfamily, Anti-Beta-Phosphoglucomutase antibody is ideal for researchers interested in Metabolism research.

**Synonyms:** goat anti-Beta-Phosphoglucomutase Antibody biotin Conjugation, biotin conjugated goat anti-Beta PGM antibody, Glucose phosphomutase 1 antibody, Glucose phosphomutase antibody, PGM antibody, pgmB antibody

**Note:** Anti-Beta-Phosphoglucomutase Biotin has been tested by ELISA and western blot. This product is assayed against 1.0 ug of Beta-Phosphoglucomutase in a standard capture ELISA using Peroxidase Conjugated Streptavidin #S000-03 and ABTS (2,2'-azino-bis-[3-ethylbenthiiazoline-6-sulfonic acid]) code # ABTS-100 as a substrate for 30 minutes at room temperature. A working dilution of 1:10,000 to 1:50,000 is suggested for this product.

### Product images:



Rockland Goat anti antibody (200-101-237 lot 8180) was used to detect purified Beta Phospho Glucomutase under reducing (R) and non-reducing (NR) conditions. Reduced samples of protein contained 4% BME and were boiled for 5 minutes. Samples of ~1ug of protein per lane were run by SDS-PAGE. Protein was transferred to nitrocellulose and probed with 1:3000 dilution of primary antibody (ON 4 C in MB-070). Detection shown was using Dylight 488 conjugated Donkey anti goat (605-741-125 lot 21094 1:10K in TBS/MB-070 1 hr RT). Images were collected using the BioRad VersaDoc System.