

## Product datasheet for **TA396699S**

### ycjM Goat Polyclonal Antibody

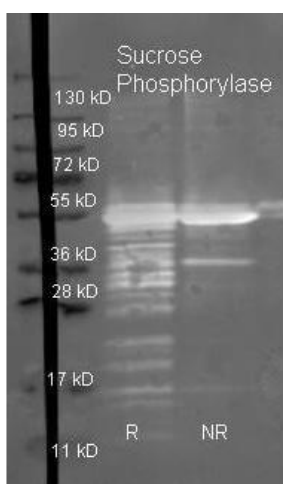
#### Product data:

Product Type:	Primary Antibodies
Applications:	ELISA, IP, WB
Recommended Dilution:	<b>WB:</b> 1:500 - 1:5,000 <b>ELISA:</b> 1:5,000 - 1:20,000
Reactivity:	Escherichia coli
Host:	Goat
Clonality:	Polyclonal
Immunogen:	Sucrose Phosphorylase [E.coli]
Specificity:	Anti-Sucrose Phosphorylase antibody is an IgG fraction antibody purified from monospecific antiserum by a multi-step process which includes delipidation, salt fractionation and ion exchange chromatography followed by extensive dialysis against the buffer stated above. Assay by immunoelectrophoresis resulted in a single precipitin arc against anti-Biotin, anti-Goat Serum as well as purified and partially purified Sucrose Phosphorylase [E.coli]. Cross reactivity against Sucrose Phosphorylase from other sources is unknown.
Formulation:	0.02 M Potassium Phosphate, 0.15 M Sodium Chloride, pH 7.2
Concentration:	1.0 mg/mL - lot specific
Conjugation:	Biotin
Storage:	Store vial at -20° C or below prior to opening. This vial contains a relatively low volume of reagent (25 µL). To minimize loss of volume dilute 1:10 by adding 225 µL of the buffer stated above directly to the vial. Recap, mix thoroughly and briefly centrifuge to collect the volume at the bottom of the vial. Use this intermediate dilution when calculating final dilutions as recommended below. Store the vial at -20°C or below after dilution. Avoid cycles of freezing and thawing.
Stability:	Expiration date is one (1) year from date of receipt.
Database Link:	<a href="#">P76041</a>



[View online »](#)

- Background:** Anti-Sucrose Phosphorylase recognizes sucrose phosphorylase, a member of the hexosyltransferases family of enzymes. Sucrose phosphorylase catalyzes the conversion of sucrose to fructose and glucose-1-phosphate both of which can be used in glycolysis, gluconeogenesis, and pentose phosphate pathway. Anti-Sucrose Phosphorylase is suitable for investigators interested in Metabolism, Cancer, and Signal Transduction.
- Synonyms:** goat anti-Sucrose Phosphorylase Antibody, biotin Conjugated goat anti-Sucrose Phosphorylase Antibody, Putative sucrose phosphorylase, Sucrose glucosyltransferase
- Note:** Anti-Sucrose Phosphorylase antibody has been assayed against 1.0 µg of Sucrose Phosphorylase in a standard capture ELISA using Peroxidase Conjugated Streptavidin #S000-03 and ABTS (2,2'-azino-bis-[3-ethylbenthiiazoline-6-sulfonic acid]) code # ABTS-100 as a substrate for 30 minutes at room temperature. A working dilution of 1:25,000 to 1:115,000 of the reconstitution concentration is suggested for this product.

**Product images:**

Rockland Goat anti Sucrose Phosphorylase antibody (200-101-231 lot 7851) was used to detect purified Sucrose Phosphorylase under reducing (R) and non-reducing (NR) conditions. Reduced samples of purified protein contained 4% BME and were boiled for 5 minutes. Samples of ~1ug of protein per lane were run by SDS-PAGE. Protein was transferred to nitrocellulose and probed with 1:3000 dilution of primary antibody (ON 4 C in MB-070). Detection shown was using Dylight 488 conjugated Donkey anti goat (605-741-125 lot 21094 1:10K in TBS/MB-070 1 hr RT). Images were collected using the BioRad VersaDoc System