

Product datasheet for **TA396698S**

LAF Goat Polyclonal Antibody

Product data:

Product Type:	Primary Antibodies
Applications:	ELISA, IP, WB
Recommended Dilution:	WB: 1:500 - 1:5,000 ELISA: 1:5,000 - 1:20,000
Reactivity:	Bacterial
Host:	Goat
Clonality:	Polyclonal
Immunogen:	Maltose Phosphorylase [E.coli]
Specificity:	Anti-Maltose Phosphorylase antibody is an IgG fraction antibody purified from monospecific antiserum by a multi-step process which includes delipidation, salt fractionation and ion exchange chromatography followed by extensive dialysis against the buffer stated above. Assay by immunoelectrophoresis resulted in a single precipitin arc against anti-Biotin, anti-Goat Serum as well as purified and partially purified Maltose Phosphorylase [E.coli]. Cross reactivity against Maltose Phosphorylase from other sources is unknown.
Formulation:	0.02 M Potassium Phosphate, 0.15 M Sodium Chloride, pH 7.2
Concentration:	1.0 mg/mL - lot specific
Conjugation:	Biotin
Storage:	Store vial at -20° C or below prior to opening. This vial contains a relatively low volume of reagent (25 µL). To minimize loss of volume dilute 1:10 by adding 225 µL of the buffer stated above directly to the vial. Recap, mix thoroughly and briefly centrifuge to collect the volume at the bottom of the vial. Use this intermediate dilution when calculating final dilutions as recommended below. Store the vial at -20°C or below after dilution. Avoid cycles of freezing and thawing.
Stability:	Expiration date is one (1) year from date of receipt.
Database Link:	B2GEX2
Background:	Anti-Maltose Phosphorylase recognizes the protein maltose phosphorylase which belongs to the glycosyltransferases family. Maltose phosphorylase catalyzes the reaction in which maltose and inorganic phosphate are converted to D-glucose and beta-D-glucose 1-phosphate.

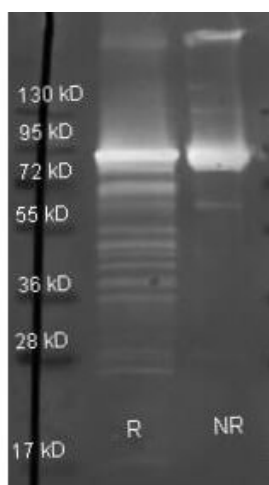


[View online »](#)

Synonyms: goat anti-Maltose Phosphorylase Antibody biotin Conjugation, Biotin Conjugated goat anti-Maltose Phosphorylase Antibody, mapA antibody, mpA antibody

Note: Anti-Maltose Phosphorylase antibody has been assayed against 1.0 µg of Maltose Phosphorylase in a standard capture ELISA using Peroxidase Conjugated Streptavidin #S000-03 and ABTS (2,2'-azino-bis-[3-ethylbenthiiazoline-6-sulfonic acid]) code # ABTS-100 as a substrate for 30 minutes at room temperature. A working dilution of 1:4,000 to 1:20,000 of the reconstitution concentration is suggested for this product.

Product images:



Rockland Goat anti Maltose Phosphorylase antibody (200-101-230 lot 7850) was used to detect Maltose Phosphorylase under reducing (R) and non-reducing (NR) conditions. Reduced samples of purified target proteins contained 4% BME and were boiled for 5 minutes. Samples of ~1 µg of protein per lane were run by SDS-PAGE. Protein was transferred to nitrocellulose and probed with 1:3000 dilution of primary antibody (ON 4 C in MB-070). Detection shown was using Dylight 488 conjugated Donkey anti goat (605-741-125 lot 21094 1:10K in TBS/MB-070 1 hr RT). Images were collected using the BioRad VersaDoc System