

Product datasheet for **TA396692S**

gIpK Goat Polyclonal Antibody

Product data:

Product Type:	Primary Antibodies
Applications:	ELISA, WB
Recommended Dilution:	WB: 1:500 - 1:2,500 ELISA: 1:1,000 - 1:5,000
Host:	Goat
Clonality:	Polyclonal
Immunogen:	Glycerol Kinase [Cellulomonas species]
Specificity:	Anti-Glycerol Kinase is an IgG fraction antibody purified from monospecific antiserum by a multi-step process which includes delipidation, salt fractionation and ion exchange chromatography followed by extensive dialysis against the buffer stated above. Assay by immunoelectrophoresis resulted in a single precipitin arc against anti-Biotin, anti-Goat Serum as well as purified and partially purified Glycerol Kinase [Cellulomonas species]. Cross reactivity against Glycerol Kinase from other sources is unknown.
Formulation:	0.02 M Potassium Phosphate, 0.15 M Sodium Chloride, pH 7.2
Concentration:	1.0 mg/mL - lot specific
Conjugation:	Biotin
Storage:	Store vial at -20° C or below prior to opening. This vial contains a relatively low volume of reagent (25 µL). To minimize loss of volume dilute 1:10 by adding 225 µL of the buffer stated above directly to the vial. Recap, mix thoroughly and briefly centrifuge to collect the volume at the bottom of the vial. Use this intermediate dilution when calculating final dilutions as recommended below. Store the vial at -20°C or below after dilution. Avoid cycles of freezing and thawing.
Stability:	Expiration date is one (1) year from date of receipt.
Database Link:	D0VZG4
Background:	Anti-Glycerol Kinase antibody recognizes the phosphotransferase enzyme glycerol kinase. Glycerol kinase catalyzes the formation of glycerol phosphate by transferring a phosphate from ATP to glycerol. Dihydroxyacetone and L-glyceraldehyde can also act as acceptors in place of glycerol. Anti-Glycerol Kinase is ideal for investigators interested in Cancer, Metabolism, and Kinase/Phosphatase enzymology.

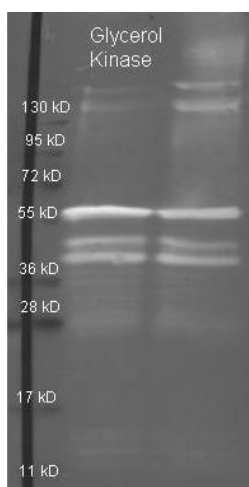


[View online »](#)

Synonyms: goat anti-Glycerol Kinase Antibody biotin Conjugation, biotin Conjugated goat anti-Glycerol Kinase Antibody, ATP glycerol 3 phosphotransferase antibody, GK antibody, GK antibody, GK1 antibody, GKD antibody, Glycerokinase antibody, Glycerol kinase antibody, Glycerol kinase deficiency antibody

Note: Anti-Glycerol Kinase has been tested by ELISA and western blot. This product is assayed against 1.0 ug of Glycerol Kinase in a standard capture ELISA using Peroxidase Conjugated Streptavidin #S000-03 and ABTS (2,2'-azino-bis-[3-ethylbenthiiazoline-6-sulfonic acid]) code # ABTS-100 as a substrate for 30 minutes at room temperature. A working dilution of 1:4,000 to 1:20,000 of the reconstitution concentration is suggested for this product.

Product images:



Rockland Goat anti Glycerol Kinase antibody (200-101-211 lot 5912) was used to detect purified Glycerol Kinase under reducing (R) and non-reducing (NR) conditions. Reduced samples of purified protein contained 4% BME and were boiled for 5 minutes. Samples of ~1ug of protein per lane were run by SDS-PAGE. Protein was transferred to nitrocellulose and probed with 1:3000 dilution of primary antibody (ON 4 C in MB-070). Detection shown was using Dylight 488 conjugated Donkey anti goat (605-741-125 lot 21094 1:10K in TBS/MB-070 1 hr RT). Images were collected using the BioRad VersaDoc System.