

Product datasheet for **TA396691**

gIpK Goat Polyclonal Antibody

Product data:

Product Type:	Primary Antibodies
Applications:	ELISA, WB
Recommended Dilution:	WB: 1:500 - 1:2,500 ELISA: 1:1,000 - 1:5,000
Host:	Goat
Clonality:	Polyclonal
Immunogen:	Glycerol Kinase [Cellulomonas species]
Specificity:	Anti-Glycerol Kinase is an IgG fraction antibody purified from monospecific antiserum by a multi-step process which includes delipidation, salt fractionation and ion exchange chromatography followed by extensive dialysis against the buffer stated above. Assay by immunoelectrophoresis resulted in a single precipitin arc against anti-Biotin, anti-Goat Serum as well as purified and partially purified Glycerol Kinase [Cellulomonas species]. Cross reactivity against Glycerol Kinase from other sources is unknown.
Formulation:	0.02 M Potassium Phosphate, 0.15 M Sodium Chloride, pH 7.2
Reconstitution Method:	Restore with deionized water (or equivalent) - Reconstitution Volume: 100 µL
Concentration:	1.0 mg/mL - lot specific
Conjugation:	Biotin
Storage:	Store vial at 4° C prior to restoration. For extended storage aliquot contents and freeze at -20° C or below. Avoid cycles of freezing and thawing. Centrifuge product if not completely clear after standing at room temperature. This product is stable for several weeks at 4° C as an undiluted liquid. Dilute only prior to immediate use.
Stability:	Expiration date is one (1) year from date of receipt.
Database Link:	D0VZG4
Background:	Anti-Glycerol Kinase antibody recognizes the phosphotransferase enzyme glycerol kinase. Glycerol kinase catalyzes the formation of glycerol phosphate by transferring a phosphate from ATP to glycerol. Dihydroxyacetone and L-glyceraldehyde can also act as acceptors in place of glycerol. Anti-Glycerol Kinase is ideal for investigators interested in Cancer, Metabolism, and Kinase/Phosphatase enzymology.

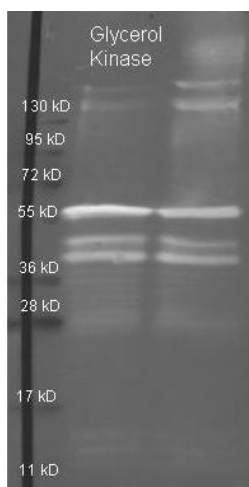


[View online »](#)

Synonyms: goat anti-Glycerol Kinase Antibody biotin Conjugation, biotin Conjugated goat anti-Glycerol Kinase Antibody, ATP glycerol 3 phosphotransferase antibody, GK antibody, GK antibody, GK1 antibody, GKD antibody, Glycerokinase antibody, Glycerol kinase antibody, Glycerol kinase deficiency antibody

Note: Anti-Glycerol Kinase has been tested by ELISA and western blot. This product is assayed against 1.0 ug of Glycerol Kinase in a standard capture ELISA using Peroxidase Conjugated Streptavidin #S000-03 and ABTS (2,2'-azino-bis-[3-ethylbenthiiazoline-6-sulfonic acid]) code # ABTS-100 as a substrate for 30 minutes at room temperature. A working dilution of 1:4,000 to 1:20,000 of the reconstitution concentration is suggested for this product.

Product images:



Rockland Goat anti Glycerol Kinase antibody (200-101-211 lot 5912) was used to detect purified Glycerol Kinase under reducing (R) and non-reducing (NR) conditions. Reduced samples of purified protein contained 4% BME and were boiled for 5 minutes. Samples of ~1ug of protein per lane were run by SDS-PAGE. Protein was transferred to nitrocellulose and probed with 1:3000 dilution of primary antibody (ON 4 C in MB-070). Detection shown was using Dylight 488 conjugated Donkey anti goat (605-741-125 lot 21094 1:10K in TBS/MB-070 1 hr RT). Images were collected using the BioRad VersaDoc System.