

Product datasheet for **TA396688S**

SUC1 Goat Polyclonal Antibody

Product data:

Product Type:	Primary Antibodies
Applications:	ELISA, WB
Recommended Dilution:	WB: 1:500 - 1:2,500 ELISA: 1:1,000 - 1:5,000
Reactivity:	Candida species
Host:	Goat
Clonality:	Polyclonal
Immunogen:	Invertase [Candida species]
Specificity:	Anti-Invertase antibody is an IgG fraction antibody purified from monospecific antiserum by a multi-step process which includes delipidation, salt fractionation and ion exchange chromatography followed by extensive dialysis against the buffer stated above. Assay by immunoelectrophoresis resulted in a single precipitin arc against anti-Biotin, anti-Goat Serum as well as purified and partially purified Invertase [Candida species]. Cross reactivity against Invertase from other sources is unknown.
Formulation:	0.02 M Potassium Phosphate, 0.15 M Sodium Chloride, pH 7.2
Concentration:	1.0 mg/mL - lot specific
Conjugation:	Biotin
Storage:	Store vial at -20° C or below prior to opening. This vial contains a relatively low volume of reagent (25 µL). To minimize loss of volume dilute 1:10 by adding 225 µL of the buffer stated above directly to the vial. Recap, mix thoroughly and briefly centrifuge to collect the volume at the bottom of the vial. Use this intermediate dilution when calculating final dilutions as recommended below. Store the vial at -20°C or below after dilution. Avoid cycles of freezing and thawing.
Stability:	Expiration date is one (1) year from date of receipt.
Database Link:	P10594



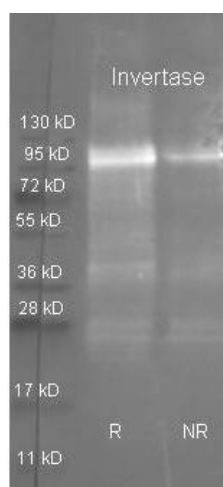
[View online »](#)

Background: Anti-Invertase antibody recognizes invertase which hydrolyzes the alpha-1,4-glycosidic bond between alpha-D-glucose and beta-D-fructose of sucrose. Bees use invertase to convert nectar to honey. In the confectionary industry, yeast-derived invertase is used to hydrolyze sucrose to glucose and fructose as fructose is more sweeter and less prone to crystallization. Anti-Invertase antibody is ideal for investigators interested in Metabolism and Cell Biology.

Synonyms: goat anti-Invertase Antibody biotin Conjugated, Biotin Conjugated goat anti-Invertase Antibody, Beta fructofuranosidase 2 antibody, Inv1 antibody, Saccharase antibody, Sucrase antibody

Note: Anti-Invertase antibody has been tested by western blot and is suitable to be assayed against 1.0 ug of Invertase in a standard capture ELISA using Peroxidase Conjugated Streptavidin #S000-03 and ABTS (2,2'-azino-bis-[3-ethylbenzothiazoline-6-sulfonic acid]) code # ABTS-100 as a substrate for 30 minutes at room temperature. A working dilution of 1:4,000 to 1:20,000 of the reconstitution concentration is suggested for this product.

Product images:



Rockland Goat anti Invertase antibody (100-101-189 lot 6736) was used to detect purified invertase under reducing (R) and non-reducing (NR) conditions. Reduced samples of purified target protein contained 4% BME and were boiled for 5 minutes. Samples of ~1ug of protein per lane were run by SDS-PAGE. Protein was transferred to nitrocellulose and probed with 1:3000 dilution of primary antibody (ON 4 C in MB-070). Detection shown was using Dylight 488 conjugated Donkey anti goat (605-741-125 lot 21094 1:10K in TBS/MB-070 1 hr RT). Images were collected using the BioRad VersaDoc System