

## Product datasheet for **TA396682**

### Goat Polyclonal Antibody

#### Product data:

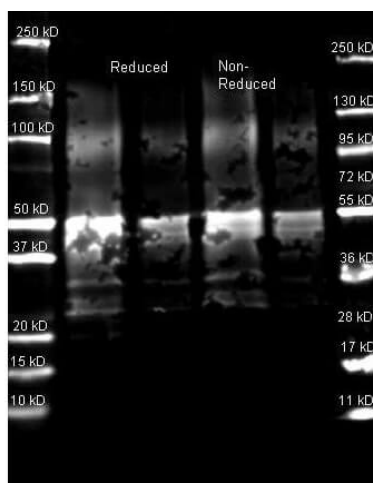
Product Type:	Primary Antibodies
Applications:	ELISA, IHC, WB
Recommended Dilution:	<b>WB:</b> 1:1,000-1:5,000 <b>IHC:</b> 1:500-1:2,500 <b>ELISA:</b> 1:2,000 - 1:10,000
Host:	Goat
Clonality:	Polyclonal
Immunogen:	Protein A [Staphylococcus aureus]
Specificity:	Anti-Protein A is an IgG fraction antibody purified from monospecific antiserum by a multi-step process which includes delipidation, salt fractionation and ion exchange chromatography followed by extensive dialysis against the buffer stated above. Assay by immunoelectrophoresis resulted in a single precipitin arc against anti-Biotin, anti-Goat Serum as well as purified and partially purified Protein A [Staphylococcus aureus]. Cross reactivity against Protein A from other sources is unknown.
Formulation:	0.02 M Potassium Phosphate, 0.15 M Sodium Chloride, pH 7.2
Reconstitution Method:	Restore with deionized water (or equivalent) - Reconstitution Volume: 100 µL
Concentration:	1.0 mg/mL - lot specific
Conjugation:	Biotin
Storage:	Store vial at -20° C or below prior to opening. This vial contains a relatively low volume of reagent (25 µL). To minimize loss of volume dilute 1:10 by adding 225 µL of the buffer stated above directly to the vial. Recap, mix thoroughly and briefly centrifuge to collect the volume at the bottom of the vial. Use this intermediate dilution when calculating final dilutions as recommended below. Store the vial at -20°C or below after dilution. Avoid cycles of freezing and thawing.
Stability:	Expiration date is one (1) year from date of receipt.



[View online »](#)

- Background:** Biotin is widely used throughout the biotechnology industry to conjugate proteins for biochemical assays. Biotin's small size typically does not affect the biological activity of protein upon biotinylation. Biotinylated proteins of interest can be enriched from a sample due to highly stable interactions. Biotin conjugated anti-Protein A antibodies are used as an amplifying reagent in immunohistochemistry, microarray assays, ELISAs, blots, and other applications.
- Synonyms:** goat anti-Protein A Antibody, Biotin Conjugated goat anti-Protein A Antibody, Protein A Biotin, Protein A BAC Antibody
- Note:** Anti-Protein A Biotin Conjugated has been tested by dot blot and western blot. This product is suitable to be assayed against 1.0 ug of Protein A in a standard capture ELISA using Peroxidase Conjugated Streptavidin #S000-03 and ABTS (2,2'-azino-bis-[3-ethylbenthiazoline-6-sulfonic acid]) code # ABTS-100 as a substrate for 30 minutes at room temperature. A working dilution of 1:4,000 to 1:20,000 of the reconstitution concentration is suggested for this product.

### Product images:



Western Blot of Goat anti-Protein A Antibody. Lane 1: Protein A Reduced. Lane 2: Protein A Reduced. Lane 3: Protein A Non-Reduced. Lane 4: Protein A Non-Reduced. Load: Lane 1 and 3 - 1.0  $\mu$ g per lane, Lane 2 and 4 - 0.25  $\mu$ g per lane. Primary antibody: Protein A antibody at 1:5,000 for overnight at 4°C. Secondary antibody: DyLight™ 649 goat secondary antibody at 1:10,000 for 90 min at RT. Block: 5% BLOTTO overnight at 4°C. Predicted/Observed size: ~50 kDa for Protein A. Other band(s): Protein A splice variants and isoforms.