

## Product datasheet for **TA396680S**

### glnA Goat Polyclonal Antibody

#### Product data:

Product Type:	Primary Antibodies
Applications:	ELISA, IP, WB
Recommended Dilution:	<b>WB:</b> 1:500 - 1:2,500 <b>ELISA:</b> 1:2,000 - 1:10,000
Reactivity:	Brevibacterium
Host:	Goat
Clonality:	Polyclonal
Immunogen:	Glutamine Synthetase [Microbial]
Specificity:	Glutamine Synthetase is an IgG fraction antibody purified from monospecific antiserum by a multi-step process which includes delipidation, salt fractionation and ion exchange chromatography followed by extensive dialysis against the buffer stated above. Assay by immunoelectrophoresis resulted in a single precipitin arc against anti-Peroxidase, anti-Goat Serum as well as purified and partially purified Glutamine Synthetase [Microbial]. Cross reactivity against Glutamine Synthetase from other sources is unknown.
Formulation:	0.02 M Potassium Phosphate, 0.15 M Sodium Chloride, pH 7.2
Concentration:	1.0 mg/mL - lot specific
Conjugation:	HRP
Storage:	Store vial at -20° C or below prior to opening. This vial contains a relatively low volume of reagent (25 µL). To minimize loss of volume dilute 1:10 by adding 225 µL of the buffer stated above directly to the vial. Recap, mix thoroughly and briefly centrifuge to collect the volume at the bottom of the vial. Use this intermediate dilution when calculating final dilutions as recommended below. Store the vial at -20°C or below after dilution. Avoid cycles of freezing and thawing.
Stability:	Expiration date is one (1) year from date of receipt.
Database Link:	<a href="#">Q79VE3</a>



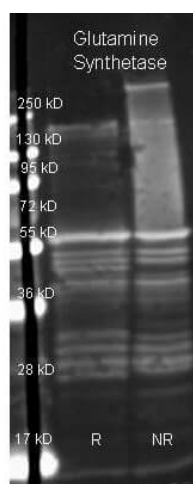
[View online »](#)

**Background:** Glutamine Synthetase catalyzes the ATP-dependent condensation of glutamate with ammonia to yield glutamine. Glutamine Synthetase is present predominantly in the brain, kidneys, and liver. In the brain it participates in the metabolic regulation of glutamate, the detoxification of brain ammonia, the assimilation of ammonia, recycling of neurotransmitters, and termination of neurotransmitter signals. Glutamine Synthetase, in the brain, is found primarily in astrocytes.

**Synonyms:** goat anti-Glutamine Synthetase Antibody HRP Conjugation, Peroxidase Conjugated goat anti-Glutamine Synthetase Antibody, Glutamine synthetase

**Note:** Anti-Glutamine Synthetase has been assayed against 1.0 ug of Glutamine Synthetase [Microbial] in a standard capture ELISA using ABTS (2,2'-azino-bis-[3-ethylbenthiazoline-6-sulfonic acid]) code # ABTS-100 as a substrate for 30 minutes at room temperature. A working dilution of 1:1,000 of the reconstitution concentration is suggested for this product.

### Product images:



Rockland Goat anti Glutamine Synthetase antibody (200-101-238 lot 8182) was used to detect Glutamine Synthetase under reducing (R) and non-reducing (NR) conditions. Reduced samples of purified target proteins contained 4% BME and were boiled for 5 minutes. Samples of ~1 ug of protein per lane were run by SDS-PAGE. Protein was transferred to nitrocellulose and probed with 1:3000 dilution of primary antibody (ON 4 C in MB-070). Detection shown was using Dylight 649 conjugated Donkey anti goat (605-743-125 lot 20834 1:10K in TBS/MB-070) 1 hr RT. Images were collected using the BioRad VersaDoc System.