

Product datasheet for **TA396678S**

pgmB Goat Polyclonal Antibody

Product data:

Product Type:	Primary Antibodies
Applications:	ELISA, WB
Recommended Dilution:	WB: 1:1,000 - 1:5,000 ELISA: 1:10,000 - 1:40,000
Reactivity:	Lactococcus lacti
Host:	Goat
Clonality:	Polyclonal
Immunogen:	Beta Phosphoglucomutase [Lactococcus lacti]
Specificity:	Beta-Phosphoglucomutase is an IgG fraction antibody purified from monospecific antiserum by a multi-step process which includes delipidation, salt fractionation and ion exchange chromatography followed by extensive dialysis against the buffer stated above. Assay by immunoelectrophoresis resulted in a single precipitin arc against anti-Peroxidase, anti-Goat Serum as well as purified and partially purified b -Phosphoglucomutase [Lactococcus lacti]. Cross reactivity against b -Phosphoglucomutase from other sources is unknown.
Formulation:	0.02 M Potassium Phosphate, 0.15 M Sodium Chloride, pH 7.2
Concentration:	1 mg/mL - lot specific
Conjugation:	HRP
Storage:	Store vial at -20° C or below prior to opening. This vial contains a relatively low volume of reagent (25 µL). To minimize loss of volume dilute 1:10 by adding 225 µL of the buffer stated above directly to the vial. Recap, mix thoroughly and briefly centrifuge to collect the volume at the bottom of the vial. Use this intermediate dilution when calculating final dilutions as recommended below. Store the vial at -20°C or below after dilution. Avoid cycles of freezing and thawing.
Stability:	Expiration date is one (1) year from date of receipt.
Database Link:	P71447



[View online »](#)

Background:

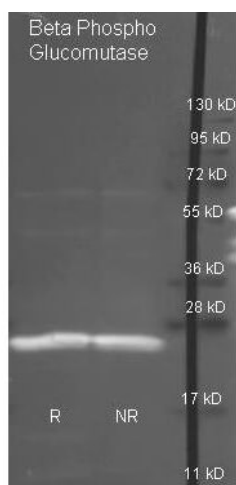
Beta-Phosphoglucomutase catalyzes the interconversion of D-glucose 1-phosphate and D-glucose 6-phosphate, forming beta-D-glucose 1,6-(bis)phosphate as an intermediate. The beta-phosphoglucomutase acts on the beta-C1 anomer of G1P. Glucose or lactose are used in preference to maltose, which is only utilized after glucose or lactose has been exhausted. It plays a key role in the regulation of the flow of carbohydrate intermediates in glycolysis and the formation of the sugar nucleotide UDP-glucose. This enzyme belongs to the family of isomerases, specifically the phosphotransferases (phosphomutases), which transfer phosphate groups within a molecule. The systematic name of this enzyme class is beta-D-glucose 1,6-phosphomutase. This enzyme participates in starch and sucrose metabolism.

Synonyms:

goat anti-Beta-Phosphoglucomutase Antibody HRP Conjugation, peroxidase conjugated goat anti-Beta PGM antibody, Glucose phosphomutase 1 antibody, Glucose phosphomutase antibody, PGM antibody, pgmB antibody

Note:

Anti-Beta-Phosphoglucomutase has been assayed against 1.0 ug of b-Phosphoglucomutase [*Lactococcus lacti*] in a standard capture ELISA using ABTS (2,2'-azino-bis-[3-ethylbenthiazoline-6-sulfonic acid]) code # ABTS-100 as a substrate for 30 minutes at room temperature. A working dilution of 1:5,000 to 1:20,000 is suggested for this product.

Product images:

Rockland Goat anti- antibody (200-101-237 lot 8180) was used to detect purified Beta Phospho Glucomutase under reducing (R) and non-reducing (NR) conditions. Reduced samples of protein contained 4% BME and were boiled for 5 minutes. Samples of ~1ug of protein per lane were run by SDS-PAGE. Protein was transferred to nitrocellulose and probed with 1:3000 dilution of primary antibody (ON 4 C in MB-070). Detection shown was using Dylight 488 conjugated Donkey anti goat (605-741-125 lot 21094 1:10K in TBS/MB-070 1 hr RT). Images were collected using the BioRad VersaDoc System.