

Product datasheet for **TA396664S**

SUC1 Goat Polyclonal Antibody

Product data:

Product Type:	Primary Antibodies
Applications:	ELISA, WB
Recommended Dilution:	WB: 1:500 - 1:2,500 ELISA: 1:1,000 - 1:5,000
Reactivity:	Candida species
Host:	Goat
Clonality:	Polyclonal
Immunogen:	Invertase [Candida]
Specificity:	Anti-Invertase is an IgG fraction antibody purified from monospecific antiserum by a multi-step process which includes delipidation, salt fractionation and ion exchange chromatography followed by extensive dialysis against the buffer stated above. Assay by immunoelectrophoresis resulted in a single precipitin arc against anti-Peroxidase, anti-Goat Serum as well as purified and partially purified Invertase [Candida]. Cross reactivity against Invertase from other sources is unknown.
Formulation:	0.02 M Potassium Phosphate, 0.15 M Sodium Chloride, pH 7.2
Concentration:	1.0 mg/mL - lot specific
Conjugation:	HRP
Storage:	Store vial at -20° C or below prior to opening. This vial contains a relatively low volume of reagent (25 µL). To minimize loss of volume dilute 1:10 by adding 225 µL of the buffer stated above directly to the vial. Recap, mix thoroughly and briefly centrifuge to collect the volume at the bottom of the vial. Use this intermediate dilution when calculating final dilutions as recommended below. Store the vial at -20°C or below after dilution. Avoid cycles of freezing and thawing.
Stability:	Expiration date is one (1) year from date of receipt.
Database Link:	P10594



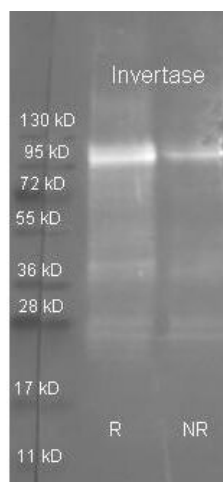
[View online »](#)

Background: Invertase (saccharase, glucosucrase, beta-h-fructosidase, beta-fructosidase, invertin, sucrose, maxinvert L 1000, fructosylinvertase, alkaline invertase, acid invertase, systematic name: beta-fructofuranosidase) is an enzyme that catalyzes the hydrolysis of sucrose. The resulting mixture of fructose and glucose is called inverted sugar syrup. Related to invertases are sucrases. Invertases and sucrases hydrolyze sucrose to give the same mixture of glucose and fructose. Invertases cleave the O-C (fructose) bond, whereas the sucrases cleave the O-C (glucose) bond.

Synonyms: goat anti-Invertase Antibody HRP Conjugated, Peroxidase Conjugated goat anti-Invertase Antibody, Beta fructofuranosidase 2 antibody, Inv1 antibody, Saccharase antibody, Sucrase antibody

Note: Anti-Invertase has been tested by ELISA and western blot. This product is assayed against 1.0 ug of Invertase [Candida] in a standard capture ELISA using ABTS (2,2'-azino-bis-[3-ethylbenzothiazoline-6-sulfonic acid]) code # ABTS-100 as a substrate for 30 minutes at room temperature. A working dilution of 1:3,000 to 1:15,000 of the reconstitution concentration is suggested for this product.

Product images:



Rockland Goat anti Invertase antibody (100-101-189 lot 6736) was used to detect purified invertase under reducing (R) and non-reducing (NR) conditions. Reduced samples of purified target protein contained 4% BME and were boiled for 5 minutes. Samples of ~1 ug of protein per lane were run by SDS-PAGE. Protein was transferred to nitrocellulose and probed with 1:3000 dilution of primary antibody (ON 4 C in MB-070). Detection shown was using Dylight 488 conjugated Donkey anti goat (605-741-125 lot 21094 1:10K in TBS/MB-070 1 hr RT) . Images were collected using the BioRad VersaDoc System