

Product datasheet for **TA396653S**

Goat Polyclonal Antibody

Product data:

Product Type:	Primary Antibodies
Applications:	ELISA, IF, IHC, WB
Recommended Dilution:	WB: 1:1000 - 1:5000 IHC: 1:1500 IF: User Optimized ELISA: 1:200 - 1:1000
Host:	Goat
Clonality:	Polyclonal
Immunogen:	Luciferase [Photinus pyralis (Firefly)]
Specificity:	This product is an IgG fraction antibody purified from monospecific antiserum by a multi-step process which includes delipidation, salt fractionation and ion exchange chromatography followed by extensive dialysis against the buffer stated above. Assay by immunoelectrophoresis resulted in a single precipitin arc against anti-Goat Serum as well as purified and partially purified Luciferase [Photinus pyralis (Firefly)]. No reactivity is observed against Sea pansy (Renilla reniformis) luciferase.
Formulation:	0.02 M Potassium Phosphate, 0.15 M Sodium Chloride, pH 7.2
Concentration:	1.0 mg/ml - lot specific
Conjugation:	Unconjugated
Storage:	Store vial at -20° C or below prior to opening. This vial contains a relatively low volume of reagent (25 µL). To minimize loss of volume dilute 1:10 by adding 225 µL of the buffer stated above directly to the vial. Recap, mix thoroughly and briefly centrifuge to collect the volume at the bottom of the vial. Use this intermediate dilution when calculating final dilutions as recommended below. Store the vial at -20°C or below after dilution. Avoid cycles of freezing and thawing.
Stability:	Expiration date is three (3) months from date of receipt.



[View online »](#)

Background:

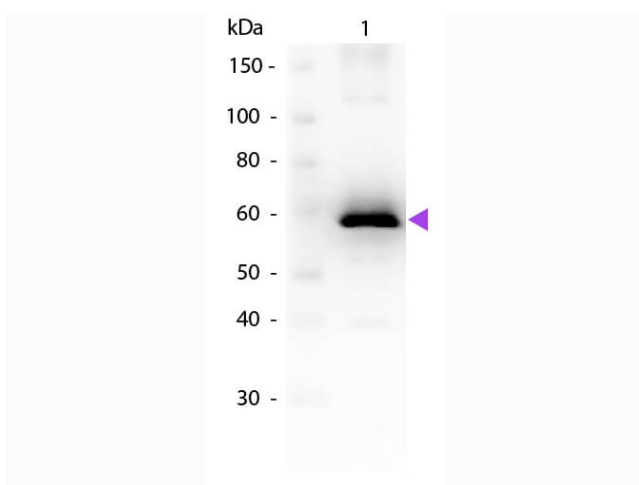
Anti luciferase Antibody recognizes luciferase that is commonly used in biological research as a reporter to assess the transcriptional activity in cells that are transfected with a genetic construct containing the luciferase gene under the control of a promoter of interest. Luciferase can also be used to detect the level of cellular ATP in cell viability assays or for kinase activity assays. Additionally proluminescent molecules that are converted to luciferin upon activity of a particular enzyme can be used to detect enzyme activity in coupled or two-step luciferase assays. Such substrates have been used to detect caspase activity and cytochrome P450 activity, among others.

Synonyms:

goat anti-Luciferase Antibody, Luciferin 4-monooxygenase, Photinus pyralis (Common eastern firefly) (Lampyrus pyralis)

Note:

Anti-Luciferase Antibody has been tested in Western Blot, IHC, IF, and ELISA. Expect a band ~60kDa in appropriate cell lysates. Although not tested, this antibody would be useful in immunoprecipitation, immunocytochemistry, and most immunological methods requiring high titers and specificity.

Product images:


Western Blot of Goat anti-Luciferase Antibody. Lane 1: Luciferase. Load: 50ng per lane. Primary antibody: Luciferase antibody at 1:1000 overnight at 4°C. Secondary antibody: Peroxidase goat secondary antibody (p/n 611-103-122) at 1:40,000 for 30 min at RT. Block: (p/n MB-070) for 30 min at RT. Predicted/Observed size: ~60 kDa for Luciferase. Other band(s): None.