

## Product datasheet for **TA396652**

### DsRed Goat Polyclonal Antibody

#### Product data:

Product Type:	Primary Antibodies
Applications:	ELISA, IF, WB
Recommended Dilution:	<b>WB:</b> 1:1000-1:10,000 <b>IF:</b> User Optimized <b>ELISA:</b> 1:2,000 - 1:10,000
Reactivity:	RFP, rRFP
Host:	Goat
Clonality:	Polyclonal
Immunogen:	The immunogen is a Red Fluorescent Protein (RFP) fusion protein corresponding to the full length amino acid sequence (234aa) derived from the mushroom polyp coral <i>Discosoma</i> .
Specificity:	Anti-RFP (GOAT) is an IgG fraction purified from monospecific antiserum by a multi-step process which includes delipidation, salt fractionation and ion exchange chromatography followed by extensive dialysis against the buffer stated above. Assay by immunoelectrophoresis resulted in a single precipitin arc against anti-Goat Serum and purified and partially purified Red Fluorescent Protein ( <i>Discosoma</i> ). No reaction was observed against Human, Mouse or Rat serum proteins. Expect reactivity against RFP and its variants: mCherry, tdTomato, mBanana, mOrange, mPlum, mOrange and mStrawberry.
Formulation:	0.02 M Potassium Phosphate, 0.15 M Sodium Chloride, pH 7.2
Concentration:	1 mg/mL - lot specific
Conjugation:	Unconjugated
Storage:	Store vial at -20° C or below prior to opening. This vial contains a relatively low volume of reagent (25 µL). To minimize loss of volume dilute 1:10 by adding 225 µL of the buffer stated above directly to the vial. Recap, mix thoroughly and briefly centrifuge to collect the volume at the bottom of the vial. Use this intermediate dilution when calculating final dilutions as recommended below. Store the vial at -20°C or below after dilution. Avoid cycles of freezing and thawing.
Stability:	Expiration date is one (1) year from date of receipt.
Database Link:	<a href="#">Q9U6Y8</a>



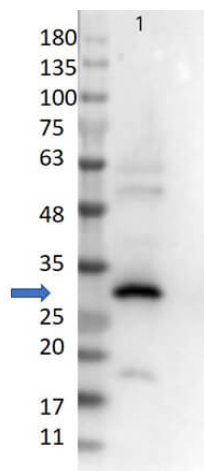
[View online »](#)

**Background:** Antibodies to RFP (*Discosoma* spp.) are intended for use in immunological assays including ELISA, western blotting, immunofluorescence, and fluorescence activated cell sorting (FACS).

**Synonyms:** goat anti-RFP antibody, DsRed, rDsRed, *Discosoma* sp. Red Fluorescent Protein, Red fluorescent protein drFP583

**Note:** Polyclonal anti-RFP has been tested by western blot and is designed to detect RFP and its variants. Optimal titers for applications should be determined by the researcher. Expect a band ~27kDa in Western Blot in the appropriate cell lysate or extract.

### Product images:



Western Blot of Goat Anti-RFP Antibody. Lane 1: 50ng of RFP protein (p/n 000-001-379). Primary Antibody: Goat Anti-RFP at 1:10,000 overnight at 2-8°C. Secondary Antibody: Donkey anti-Goat IgG HRP (p/n 605-703-125) at 1:40,000 for 30 min at RT. Blocking buffer: BlockOut® (p/n MB-073). Predicted MW: ~27kDa.