

## Product datasheet for **TA396651S**

### Fibrinogen alpha chain (FGA) Goat Polyclonal Antibody

#### Product data:

Product Type:	Primary Antibodies
Applications:	ELISA, IHC, WB
Recommended Dilution:	<b>WB:</b> 1:2,000 - 1:10,000 <b>IHC:</b> User Optimized <b>ELISA:</b> 1:20,000 - 1:100,000
Reactivity:	Human
Host:	Goat
Clonality:	Polyclonal
Immunogen:	Fibrinogen [Human Plasma]
Specificity:	Anti-FIBRINOGEN is an IgG fraction antibody purified from monospecific antiserum by a multi-step process which includes delipidation, salt fractionation and ion exchange chromatography followed by extensive dialysis against the buffer stated above. Assay by immunoelectrophoresis resulted in a single precipitin arc against anti-Goat Serum as well as purified and partially purified Fibrinogen [Human Plasma]. Cross reactivity against Fibrinogen from other sources is unknown.
Formulation:	0.02 M Potassium Phosphate, 0.15 M Sodium Chloride, pH 7.2
Concentration:	1.0 mg/ml - lot specific
Conjugation:	Unconjugated
Storage:	Store vial at -20° C or below prior to opening. This vial contains a relatively low volume of reagent (25 µL). To minimize loss of volume dilute 1:10 by adding 225 µL of the buffer stated above directly to the vial. Recap, mix thoroughly and briefly centrifuge to collect the volume at the bottom of the vial. Use this intermediate dilution when calculating final dilutions as recommended below. Store the vial at -20°C or below after dilution. Avoid cycles of freezing and thawing.
Stability:	Expiration date is one (1) year from date of receipt.
Gene Name:	fibrinogen alpha chain
Database Link:	<a href="#">Entrez Gene 2243 Human P02671</a>



[View online »](#)

**Background:**

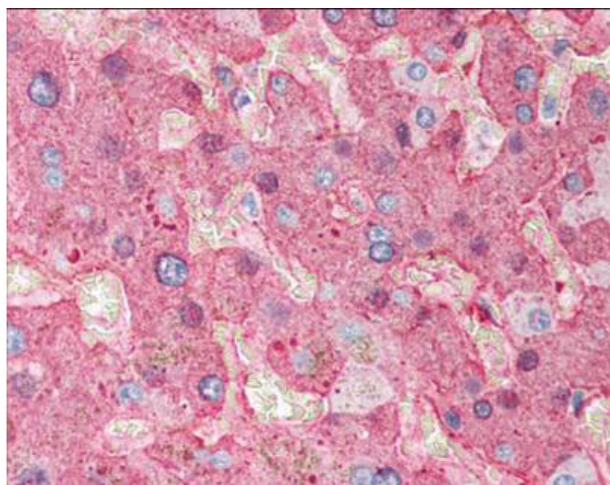
Fibrinogen (factor I) is a soluble plasma glycoprotein, synthesized by the liver, that is converted by thrombin into fibrin during blood coagulation. This is achieved through processes in the coagulation cascade that activate the zymogen prothrombin to the serine protease thrombin, which is responsible for converting fibrinogen into fibrin. Fibrin is then cross linked by factor XIII to form a clot. FXIIIa stabilizes fibrin further by incorporation of the fibrinolysis inhibitors alpha-2-antiplasmin and TAFI (thrombin activatable fibrinolysis inhibitor, procarboxypeptidase B), and binding to several adhesive proteins of various cells. Both the activation of Factor XIII by thrombin and plasminogen activator (t-PA) are catalyzed by fibrin. Fibrin specifically binds the activated coagulation factors factor Xa and thrombin and entraps them in the network of fibers, thus functioning as a temporary inhibitor of these enzymes, which stay active and can be released during fibrinolysis. Recent research has shown that fibrin plays a key role in the inflammatory response. Anti-Fibrinogen (Human Plasma) is ideal for Serum Protein Component research.

**Synonyms:**

goat anti-Fibrinogen Antibody, FGA antibody, FGA protein antibody, FGB antibody, FGG antibody, Fib2 antibody, Fibrinogen A alpha polypeptide antibody, Fibrinogen A alpha polypeptide chain antibody, Fibrinogen alpha chain antibody

**Note:**

Anti-FIBRINOGEN has been tested in western blot and immunohistochemistry. This antibody is suitable when assayed against 1.0 µg of Fibrinogen [Human Plasma] in a standard ELISA using Peroxidase conjugated Affinity Purified anti-Goat IgG [H&L] (Rabbit) code #605-4302 and (ABTS (2,2'-azino-bis-[3-ethylbenthiiazoline-6-sulfonic acid]) code # ABTS-100 as a substrate for 30 minutes at room temperature. A working dilution of 1:10,000 to 1:50,000 of the reconstitution concentration is suggested for this product. Specific conditions for reactivity should be optimized by the end user.

**Product images:**

Immunohistochemistry of Goat Anti-Fibrinogen antibody. Tissue: human liver tissue. Fixation: formalin fixed paraffin embedded. Antigen retrieval: not required. Primary antibody: Fibrinogen antibody at 1:500 for 1 h at RT. Secondary antibody: Peroxidase goat secondary antibody at 1:10,000 for 45 min at RT. Localization: Fibrinogen is localized in plasma. Staining: Fibrinogen as precipitated red signal with hematoxylin purple nuclear counterstain.