

## Product datasheet for **TA396644S**

### ycjM Goat Polyclonal Antibody

#### Product data:

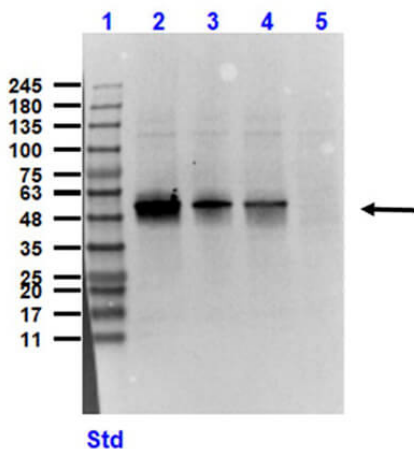
Product Type:	Primary Antibodies
Applications:	ELISA, IP, WB
Recommended Dilution:	<b>WB:</b> 1:500 - 1:5,000 <b>ELISA:</b> 1:5,000 - 1:20,000
Reactivity:	Escherichia coli
Host:	Goat
Clonality:	Polyclonal
Immunogen:	Sucrose Phosphorylase [E.coli]
Specificity:	Anti-Sucrose phosphorylase is an IgG fraction antibody purified from monospecific antiserum by a multi-step process which includes delipidation, salt fractionation and ion exchange chromatography followed by extensive dialysis against the buffer stated above. Assay by immunoelectrophoresis resulted in a single precipitin arc against anti-Goat Serum as well as purified and partially purified Sucrose Phosphorylase [E.coli]. Cross reactivity against Sucrose Phosphorylase from other sources is unknown.
Formulation:	0.02 M Potassium Phosphate, 0.15 M Sodium Chloride, pH 7.2
Concentration:	1 mg/mL - lot specific
Conjugation:	Unconjugated
Storage:	Store vial at -20° C or below prior to opening. This vial contains a relatively low volume of reagent (25 µL). To minimize loss of volume dilute 1:10 by adding 225 µL of the buffer stated above directly to the vial. Recap, mix thoroughly and briefly centrifuge to collect the volume at the bottom of the vial. Use this intermediate dilution when calculating final dilutions as recommended below. Store the vial at -20°C or below after dilution. Avoid cycles of freezing and thawing.
Stability:	Expiration date is one (1) year from date of receipt.
Database Link:	<a href="#">P76041</a>
Background:	Sucrose phosphorylase catalyzes as Sucrose + phosphate = D-fructose + alpha-D-glucose 1-phosphate.
Synonyms:	goat anti-Sucrose Phosphorylase Antibody, Putative sucrose phosphorylase, Sucrose glucosyltransferase



[View online »](#)

**Note:** Anti-Sucrose phosphorylase Antibody has been tested by western blot and is suitable to be assayed against 1.0  $\mu\text{g}$  of Sucrose Phosphorylase [*E.coli*] in a standard ELISA using Peroxidase conjugated Affinity Purified anti-Goat IgG [H&L] (Goat) code #611-1302 and (ABTS (2,2'-azino-bis-[3-ethylbenthiiazoline-6-sulfonic acid]) code # ABTS-100 as a substrate for 30 minutes at room temperature. A working dilution of 1:6,500 to 1:32,000 of the reconstitution concentration is suggested for this product.

### Product images:



Western Blot of Goat Anti-Sucrose Phosphorylase Antibody. Lane 1: Opal Prestained Ladder (p/n MB-210-0500). Lane 2: HeLa Lysate (10 $\mu\text{g}$ ) spiked with Sucrose Phosphorylase protein (50ng). Lane 3: HeLa Lysate (10 $\mu\text{g}$ ) spiked with Sucrose Phosphorylase protein (20ng). Lane 4: HeLa Lysate (10 $\mu\text{g}$ ) spiked with Sucrose Phosphorylase protein (10ng). Lane 5: HeLa Lysate (10 $\mu\text{g}$ ) (p/n W09-000-364). Primary Antibody: Anti-Sucrose Phosphorylase at 1 $\mu\text{g}/\text{mL}$  overnight at 2-8 $^{\circ}\text{C}$ . Secondary Antibody: Donkey Anti-Goat IgG HRP mx8 custom p/n at 1:40,000 for 30mins at RT. Block: BlockOut Buffer (p/n MB-073). Expect/Observe MW: ~50kDa.