

Product datasheet for **TA396638S**

glpK Goat Polyclonal Antibody

Product data:

Product Type:	Primary Antibodies
Applications:	ELISA, WB
Recommended Dilution:	WB: 1:500 - 1:2,000 ELISA: 1,4,000 - 1:20,000
Host:	Goat
Clonality:	Polyclonal
Immunogen:	Glycerol Kinase [Cellulomonas species]
Specificity:	Anti-Glycerol Kinase is an IgG fraction antibody purified from monospecific antiserum by a multi-step process which includes delipidation, salt fractionation and ion exchange chromatography followed by extensive dialysis against the buffer stated above. Assay by immunoelectrophoresis resulted in a single precipitin arc against anti-Goat Serum as well as purified and partially purified Glycerol Kinase [Cellulomonas species]. Cross reactivity against Glycerol Kinase from other sources is unknown.
Formulation:	0.02 M Potassium Phosphate, 0.15 M Sodium Chloride, pH 7.2
Concentration:	1 mg/ml - lot specific
Conjugation:	Unconjugated
Storage:	Store vial at -20° C or below prior to opening. This vial contains a relatively low volume of reagent (25 µL). To minimize loss of volume dilute 1:10 by adding 225 µL of the buffer stated above directly to the vial. Recap, mix thoroughly and briefly centrifuge to collect the volume at the bottom of the vial. Use this intermediate dilution when calculating final dilutions as recommended below. Store the vial at -20°C or below after dilution. Avoid cycles of freezing and thawing.
Stability:	Expiration date is one (1) year from date of receipt.
Database Link:	<u>D0VZG4</u>
Background:	Glycerol Kinase is the key enzyme in the regulation of glycerol uptake and metabolism. It catalyzes the phosphorylation of glycerol to yield sn-glycerol 3-phosphate. It is inhibited by fructose 1,6-bisphosphate (FBP). This protein is involved in step 1 of the subpathway that synthesizes sn-glycerol 3-phosphate from glycerol.

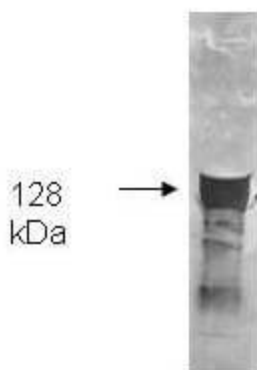


[View online »](#)

Synonyms: goat anti-Glycerol Kinase Antibody, ATP glycerol 3 phosphotransferase antibody, GK antibody, GK antibody, GK1 antibody, GKD antibody, Glycerokinase antibody, Glycerol kinase antibody, Glycerol kinase deficiency antibody

Note: Anti-Glycerol Kinase Antibody has been tested by ELISA and western blot. This product is assayed against 1.0 µg of Glycerol Kinase [Cellulomonas species] in a standard ELISA using Peroxidase conjugated Affinity Purified anti-Goat IgG [H&L] (Rabbit) code #605-4302 and (ABTS (2,2'-azino-bis-[3-ethylbenthiazoline-6-sulfonic acid]) code # ABTS-100 as a substrate for 30 minutes at room temperature. A working dilution of 1:4,000 to 1:18,000 of the reconstitution concentration is suggested for this product.

Product images:



Both the antiserum and IgG fractions of anti-Glycerol Kinase (Cellulomonas) are shown to detect the 128,000 dalton enzyme in cellular extracts. Approximately 10 µg of total protein is loaded per lane. A 1:4,000 dilution of the primary antibody is used followed by detection using HRP Rabbit-a-Goat IgG [H&L] (605-4302) diluted 1:4,000 and color development using 4-CN substrate until sufficient color develops. Other detection systems will yield similar results.