

Product datasheet for **TA396637**

gIpK Goat Polyclonal Antibody

Product data:

Product Type:	Primary Antibodies
Applications:	ELISA, WB
Recommended Dilution:	WB: 1:500 - 1:2,000 ELISA: 1,4,000 - 1:20,000
Host:	Goat
Clonality:	Polyclonal
Immunogen:	Glycerol Kinase [Cellulomonas species]
Specificity:	Anti-Glycerol Kinase is an IgG fraction antibody purified from monospecific antiserum by a multi-step process which includes delipidation, salt fractionation and ion exchange chromatography followed by extensive dialysis against the buffer stated above. Assay by immunoelectrophoresis resulted in a single precipitin arc against anti-Goat Serum as well as purified and partially purified Glycerol Kinase [Cellulomonas species]. Cross reactivity against Glycerol Kinase from other sources is unknown.
Formulation:	0.02 M Potassium Phosphate, 0.15 M Sodium Chloride, pH 7.2
Reconstitution Method:	Restore with deionized water (or equivalent) - Reconstitution Volume: 100 mL
Concentration:	1 mg/ml - lot specific
Conjugation:	Unconjugated
Storage:	Store vial at 4° C prior to restoration. For extended storage aliquot contents and freeze at -20° C or below. Avoid cycles of freezing and thawing. Centrifuge product if not completely clear after standing at room temperature. This product is stable for several weeks at 4° C as an undiluted liquid. Dilute only prior to immediate use.
Stability:	Expiration date is one (1) year from date of receipt.
Database Link:	D0VZG4
Background:	Glycerol Kinase is the key enzyme in the regulation of glycerol uptake and metabolism. It catalyzes the phosphorylation of glycerol to yield sn-glycerol 3-phosphate. It is inhibited by fructose 1,6-bisphosphate (FBP). This protein is involved in step 1 of the subpathway that synthesizes sn-glycerol 3-phosphate from glycerol.

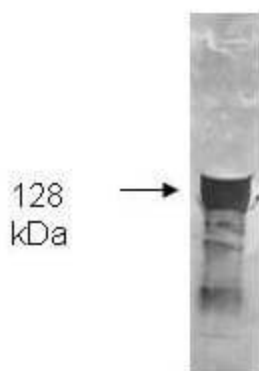


[View online »](#)

Synonyms: goat anti-Glycerol Kinase Antibody, ATP glycerol 3 phosphotransferase antibody, GK antibody, GK antibody, GK1 antibody, GKD antibody, Glycerokinase antibody, Glycerol kinase antibody, Glycerol kinase deficiency antibody

Note: Anti-Glycerol Kinase Antibody has been tested by ELISA and western blot. This product is assayed against 1.0 µg of Glycerol Kinase [Cellulomonas species] in a standard ELISA using Peroxidase conjugated Affinity Purified anti-Goat IgG [H&L] (Rabbit) code #605-4302 and (ABTS (2,2'-azino-bis-[3-ethylbenthiiazoline-6-sulfonic acid]) code # ABTS-100 as a substrate for 30 minutes at room temperature. A working dilution of 1:4,000 to 1:18,000 of the reconstitution concentration is suggested for this product.

Product images:



Both the antiserum and IgG fractions of anti-Glycerol Kinase (Cellulomonas) are shown to detect the 128,000 dalton enzyme in cellular extracts. Approximately 10 µg of total protein is loaded per lane. A 1:4,000 dilution of the primary antibody is used followed by detection using HRP Rabbit-a-Goat IgG [H&L] (605-4302) diluted 1:4,000 and color development using 4-CN substrate until sufficient color develops. Other detection systems will yield similar results.