

## Product datasheet for **TA396629S**

### Goat Polyclonal Antibody

#### Product data:

Product Type:	Primary Antibodies
Applications:	ELISA, IP, WB
Recommended Dilution:	<b>WB:</b> 1:2,000 - 1:10,000 <b>ELISA:</b> 1:20,000 - 1:100,000
Host:	Goat
Clonality:	Polyclonal
Immunogen:	Protein A [Staphylococcus aureus]
Specificity:	Protein A Antibody is an IgG fraction antibody purified from monospecific antiserum by a multi-step process which includes delipidation, salt fractionation and ion exchange chromatography followed by extensive dialysis against the buffer stated above. Assay by immunoelectrophoresis resulted in a single precipitin arc against purified and partially purified Protein A [Staphylococcus aureus] and anti-Goat Serum. Cross reactivity against Protein A from other sources is unknown.
Formulation:	0.02 M Potassium Phosphate, 0.15 M Sodium Chloride, pH 7.2
Concentration:	1.0 mg/mL - lot specific
Conjugation:	Unconjugated
Storage:	Store vial at -20° C or below prior to opening. This vial contains a relatively low volume of reagent (25 µL). To minimize loss of volume dilute 1:10 by adding 225 µL of the buffer stated above directly to the vial. Recap, mix thoroughly and briefly centrifuge to collect the volume at the bottom of the vial. Use this intermediate dilution when calculating final dilutions as recommended below. Store the vial at -20°C or below after dilution. Avoid cycles of freezing and thawing.
Stability:	Expiration date is three (3) months from date of receipt.



[View online »](#)

**Background:**

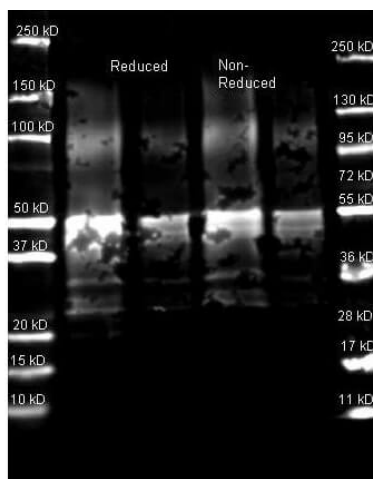
Anti-Protein A Antibody detects Protein A. Protein A is a 56 kDa surface protein originally found in the cell wall of the bacterium *Staphylococcus aureus* encoded by the *spa* gene. Protein A is an efficient binding protein to the immunoglobulins and is used in biochemical research because of its ability to bind. Protein A binds with high affinity to human IgG1 and IgG2 as well as mouse IgG2a and IgG2b. Protein A binds with moderate affinity to human IgM, IgA and IgE as well as to mouse IgG3 and IgG1. It does not react with human IgG3 or IgD, nor will it react to mouse IgM, IgA or IgE. Protein A is commonly used in bioprocessing and bioseparations.

**Synonyms:**

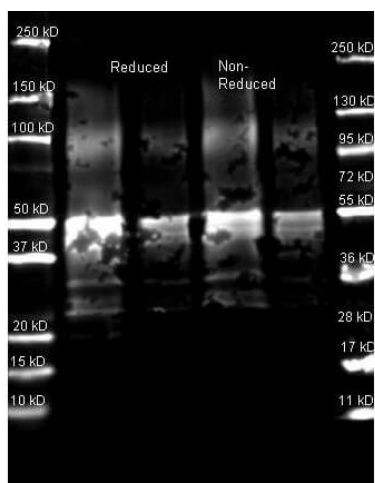
goat anti-Protein A Antibody, goat anti Protein A, goat anti PA

**Note:**

Anti-Protein A Antibody has been tested by western blot and is suitable for immunoprecipitation, immunodiffusion, conjugation and most immunological methods requiring high titer and specificity. Optimal concentration in immunoassays should be determined by the researcher.

**Product images:**

Western Blot of Goat anti-Protein A Antibody. Lane 1: Protein A Reduced. Lane 2: Protein A Reduced. Lane 3: Protein A Non-Reduced. Lane 4: Protein A Non-Reduced. Load: Lane 1 and 3 - 1.0  $\mu$ g per lane, Lane 2 and 4 - 0.25  $\mu$ g per lane. Primary antibody: Protein A antibody at 1:5,000 for overnight at 4°C. Secondary antibody: DyLight™ 649 goat secondary antibody at 1:10,000 for 90 min at RT. Block: 5% BLOTTO overnight at 4°C. Predicted/Observed size: ~50 kDa for Protein A. Other band(s): Protein A splice variants and isoforms.



Western Blot of Goat anti-Protein A Antibody. Lane 1: Protein A Reduced. Lane 2: Protein A Reduced. Lane 3: Protein A Non-Reduced. Lane 4: Protein A Non-Reduced. Load: Lane 1 and 3 - 1.0  $\mu$ g per lane, Lane 2 and 4 - 0.25  $\mu$ g per lane. Primary antibody: Protein A antibody at 1:5,000 for overnight at 4°C. Secondary antibody: DyLight™ 649 goat secondary antibody at 1:10,000 for 90 min at RT. Block: 5% BLOTTO overnight at 4°C. Predicted/Observed size: ~50 kDa for Protein A. Other band(s): Protein A splice variants and isoforms.