

Product datasheet for **TA396627S**

gox Goat Polyclonal Antibody

Product data:

Product Type:	Primary Antibodies
Applications:	ELISA, IHC, WB
Recommended Dilution:	WB: 1:1000 - 1:5000 IHC: User Optimized ELISA: 1:2,000 - 1:10,000
Reactivity:	Aspergillus niger
Host:	Goat
Clonality:	Polyclonal
Immunogen:	Glucose Oxidase [Aspergillus niger]
Specificity:	Anti-Glucose Oxidase Antibody is an IgG fraction antibody purified from monospecific antiserum by a multi-step process which includes delipidation, salt fractionation and ion exchange chromatography followed by extensive dialysis against the buffer stated above. Assay by immunoelectrophoresis resulted in a single precipitin arc against anti-Goat Serum as well as purified and partially purified Glucose Oxidase [Aspergillus niger]. Cross reactivity against Glucose Oxidase from other tissues and species may occur but have not been specifically determined.
Formulation:	0.02 M Potassium Phosphate, 0.15 M Sodium Chloride, pH 7.2
Concentration:	1.0 mg/ml - lot specific
Conjugation:	Unconjugated
Storage:	Store vial at -20° C or below prior to opening. This vial contains a relatively low volume of reagent (25 µL). To minimize loss of volume dilute 1:10 by adding 225 µL of the buffer stated above directly to the vial. Recap, mix thoroughly and briefly centrifuge to collect the volume at the bottom of the vial. Use this intermediate dilution when calculating final dilutions as recommended below. Store the vial at -20°C or below after dilution. Avoid cycles of freezing and thawing.
Stability:	Expiration date is three (3) months from date of receipt.
Database Link:	P13006



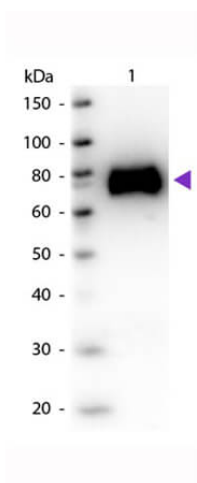
[View online »](#)

Background: Glucose Oxidase enzyme is widely applied for the determination of glucose in body fluids and in removing residual glucose or oxygen from foods and beverages. Furthermore, glucose oxidase-producing molds such as aspergillus and penicillium species are used for the biological production of gluconic acid.

Synonyms: goat anti-Glucose Oxidase Antibody, Beta D Glucose Oxygen 1 Oxido Reductase antibody, Glucose oxidase (Precursor) antibody, Glucose Oxyhydrase antibody, GOD antibody

Note: Anti-Glucose Oxidase has been tested in western blot and is suitable for use in ELISA and immunohistochemistry. Specific conditions for reactivity should be optimized by the end user.

Product images:



Western Blot of Goat anti-Glucose Oxidase antibody. Lane 1: Glucose Oxidase. Load: 50 ng per lane. Primary antibody: Glucose Oxidase antibody at 1:1,000 for overnight at 4°C. Secondary antibody: Peroxidase goat secondary antibody (p/n 605-4302) at 1:40,000 for 30 min at RT. Block: (p/n MB-070) for 30 min at RT. Predicted/Observed size: 65-70 kDa, 65-70 kDa for Glucose Oxidase. Other band(s): None.