

## Product datasheet for **TA396618**

### Swine IgG (H&L) Antibody

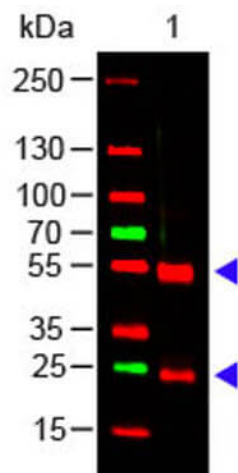
#### Product data:

Product Type:	Secondary Antibodies
Product Name:	Swine IgG (H&L) Antibody
Applications:	ELISA, IHC, WB
Recommended Dilution:	<b>WB:</b> 1:2,000 - 1:10,000 <b>IHC:</b> 1:1,000 - 1:5,000 <b>ELISA:</b> 1:20,000 - 1:100,000
Host:	Rabbit
Immunogen:	Swine IgG whole molecule
Formulation:	0.01 M Sodium Phosphate, 0.15 M Sodium Chloride, pH 7.2
Reconstitution Method:	Restore with deionized water (or equivalent) - Reconstitution Volume: 2.0 mL
Concentration:	90 mg/mL - lot specific
Conjugation:	Unconjugated
Storage:	Store vial at 4° C prior to restoration. For extended storage aliquot contents and freeze at -20° C or below. Avoid cycles of freezing and thawing. Centrifuge product if not completely clear after standing at room temperature. This product is stable for several weeks at 4° C as an undiluted liquid. Dilute only prior to immediate use.
Note:	Anti-Swine IgG antibody has been tested in western blot and is suitable for use in ELISA and immunohistochemistry. Specific conditions for reactivity should be optimized by the end user.



[View online »](#)

## Product images:



Western Blot of Rabbit anti-Swine IgG (H&L) Antibody. Lane 1: Swine IgG (p/n 014-0102). Load: 100 ng per lane. Primary antibody: Swine IgG (H&L) Antibody at 1:1000 for overnight at 4°C. Secondary antibody: DyLight™ 649 goat anti-rabbit (p/n 611-143-002) at 1:20,000 for 30 min at RT. Block: MB-070 for 30 min at RT. Predicted/Observed size: 55 and 28 kDa, 55 and 28 kDa.