

Product datasheet for **TA396583S**

IL8 (CXCL8) Rabbit Polyclonal Antibody

Product data:

Product Type:	Primary Antibodies
Applications:	ELISA, IHC, IP, WB
Recommended Dilution:	WB: 1:500 - 1:2,000 IHC: 1:400 - 1:800 ELISA: 1:1,000 - 1:5,000
Reactivity:	Human
Host:	Rabbit
Clonality:	Polyclonal
Immunogen:	The whole rabbit serum was prepared by repeated immunizations with recombinant human IL-8 produced in E.coli.
Specificity:	Anti-IL 8 antiserum has been heated to 56°C for 30 minutes. The antiserum detects recombinant and native IL-8 present in body fluids and cell supernatants in ELISA. Although likely to be functional, this antiserum has not been evaluated in other assays, including neutralization and immunohistochemistry.
Formulation:	None
Concentration:	75 mg/mL - lot specific
Conjugation:	Unconjugated
Storage:	Store vial at -20° C or below prior to opening. This vial contains a relatively low volume of reagent (25 µL). To minimize loss of volume dilute 1:10 by adding 225 µL of the buffer stated above directly to the vial. Recap, mix thoroughly and briefly centrifuge to collect the volume at the bottom of the vial. Use this intermediate dilution when calculating final dilutions as recommended below. Store the vial at -20°C or below after dilution. Avoid cycles of freezing and thawing.
Stability:	Expiration date is one (1) year from date of receipt.
Gene Name:	C-X-C motif chemokine ligand 8
Database Link:	Entrez Gene 3576 Human P10145



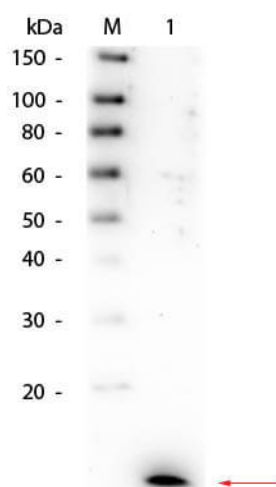
[View online »](#)

Background: Interleukin-8 is a chemokine produced by macrophages and other cell types such as epithelial cells. Human IL-8 (CXCL8) antibody is commonly used in many experiments focused around inflammation. Anti-IL-8 antibody is ideal for investigators involved in Cancer, Immunology and Cardiovascular research.

Synonyms: Anti-CXCL 8, CXCL8 antibody, 310C antibody, AMCF 1 antibody, AMCF1 antibody, b ENAP antibody, Beta thromboglobulin like protein antibody, CXC chemokine ligand 8 antibody, nterleukin8 antibody, K60 antibody, LECT antibody, LUCT antibody, rabbit anti-Interleukin 8 Antibody, rabbit anti-IL-8

Note: IL 8 antibody has been tested for use in ELISA and western blot. It recognizes IL-8 found in cells, supernatants and other body fluids. Reactivity in other immunoassays is unknown.

Product images:



Western Blot of Rabbit anti-Human IL-8 Antibody. Lane 1: Recombinant Human IL-8. Load: 50 ng per lane. Primary antibody: Rabbit anti-Human IL-8 Antibody 1:1,000 overnight at 4°C. Secondary antibody: HRP Goat-a-rabbit secondary antibody (p/n 611-103-122) at 1:40,000 for 30 min at RT. Block: MB-070 for 30 min at RT. Predicted/Observed size: 11 kDa, 11 kDa for Human IL-8.