

Product datasheet for **TA396542S**

env Rabbit Polyclonal Antibody

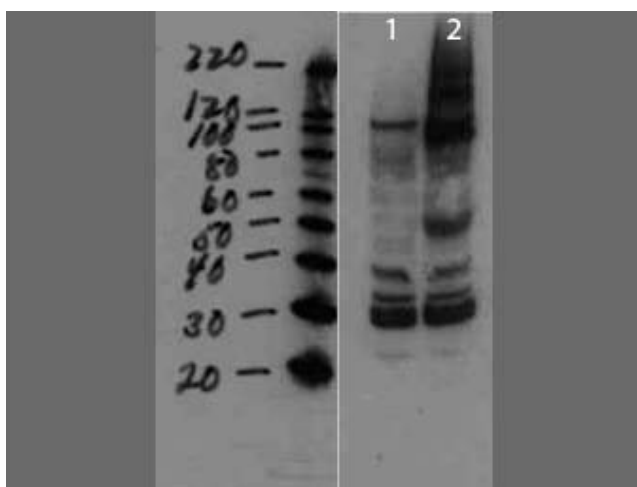
Product data:

Product Type:	Primary Antibodies
Applications:	ELISA, WB
Recommended Dilution:	WB: 1:1000-1:2000 ELISA: 1:10,000 - 1:20,000
Reactivity:	Virus
Host:	Rabbit
Clonality:	Polyclonal
Immunogen:	MMTV was prepared from whole rabbit serum produced by repeated immunizations with a full length sequence for mouse mammary tumor virus surface protein tagged with His.
Specificity:	Mouse mammary tumor virus surface protein antibody was prepared from monospecific, delipidated and defibrinated antiserum, with addition of sodium azide to 0.01% and cross adsorbed with 6X HIS. A BLAST analysis was used to suggest cross-reactivity with MMTV from mouse based on a 100% homology with the immunizing sequence. Reactivity against homologues from other sources is not known.
Formulation:	0.02 M Potassium Phosphate, 0.15 M Sodium Chloride, pH 7.2
Concentration:	66mg/mL - lot specific
Conjugation:	Unconjugated
Storage:	Store vial at -20° C or below prior to opening. This vial contains a relatively low volume of reagent (25 µL). To minimize loss of volume dilute 1:10 by adding 225 µL of the buffer stated above directly to the vial. Recap, mix thoroughly and briefly centrifuge to collect the volume at the bottom of the vial. Use this intermediate dilution when calculating final dilutions as recommended below. Store the vial at -20°C or below after dilution. Avoid cycles of freezing and thawing.
Database Link:	<u>P03374</u>

[View online »](#)

- Background:** This antibody is designed, produced, and validated as part of a collaboration between Rockland and the National Cancer Institute (NCI) and is suitable for Cancer, Enzyme, and Viral research. Mouse mammary tumor virus surface protein binds the virus to the receptor of the host cells triggering transmembrane protein refolding. This activates the fusion peptide and the structure coils and repeats positioning the fusion peptide near the C-terminus region. Inturn increasing close proximity and then fusion of viral and cell membranes. Anti-MMTV is ideal for researchers interested in Cancer, Viral, and Enzyme research.
- Synonyms:** rabbit anti-MMTV Antibody, rabbit anti-mouse mammary tumor virus surface protein antibody, Envelope glycoprotein gp70, Surface protein, Glycoprotein 52, Transmembrane protein, Glycoprotein 36, Mouse mammary tumor virus (strain GR) (MMTV)
- Note:** Anti-MMTV Antibody has been tested for use in western blotting. Specific conditions for reactivity should be optimized by the end user. Expect band approximately 41.2 kDa in size corresponding to MMTV surface protein by western blotting in the appropriate cell lysate or extract.

Product images:



Western Blot of Rabbit anti-MMTV antibody. Lane 1: cell lysate negative control. Lane 2: cell lysate spiked with purified virus. Load: 10 µg per lane. Primary antibody: Mouse Mammary Tumor Virus Surface Protein antibody at 1:1000 for overnight at 4°C. Secondary antibody: IRDye800™ rabbit secondary antibody at 1:10,000 for 45 min at RT. Block: 5% BLOTTO overnight at 4°C. Predicted/Observed size: ~41.2kDa for MMTV. Other bands: higher bands not unexpected since proteins are made from a larger precursor.