

## Product datasheet for **TA396540S**

### MORC3 Rabbit Polyclonal Antibody

#### Product data:

Product Type:	Primary Antibodies
Applications:	ELISA, WB
Recommended Dilution:	<b>WB:</b> 1:1000-1:5000 <b>ELISA:</b> 1:20,000-1:50,000
Reactivity:	Human, Mouse
Host:	Rabbit
Clonality:	Polyclonal
Immunogen:	Morc3 whole rabbit serum was prepared by repeated immunizations with a human Morc3 recombinant protein.
Specificity:	Morc3 antibody was prepared from monospecific antiserum by delipidation and defibrination. The antibody is specific for human Morc3 in expressed cell lysates. Cross reactivity is seen in mouse Morc3. Cross reactivity to other Morc proteins has not been determined.
Formulation:	0.02 M Potassium Phosphate, 0.15 M Sodium Chloride, pH 7.2
Concentration:	70 mg/mL - lot specific
Conjugation:	Unconjugated
Storage:	Store vial at -20° C or below prior to opening. This vial contains a relatively low volume of reagent (25 µL). To minimize loss of volume dilute 1:10 by adding 225 µL of the buffer stated above directly to the vial. Recap, mix thoroughly and briefly centrifuge to collect the volume at the bottom of the vial. Use this intermediate dilution when calculating final dilutions as recommended below. Store the vial at -20°C or below after dilution. Avoid cycles of freezing and thawing.
Stability:	Expiration date is one (1) year from date of receipt.
Gene Name:	MORC family CW-type zinc finger 3
Database Link:	<a href="#">Entrez Gene 23515 Human Q14149</a>



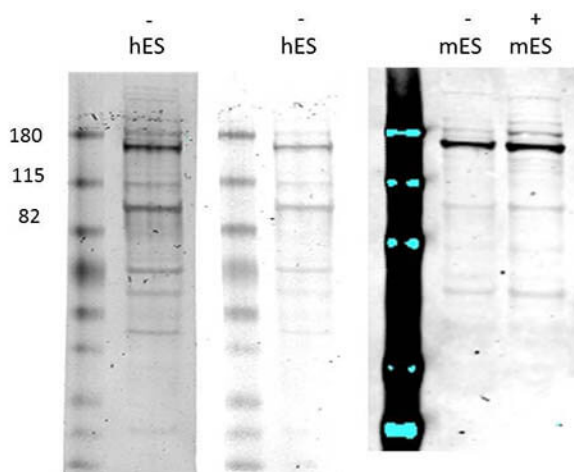
[View online »](#)

**Background:** The Morc (microorchidia) family of proteins are ATPases of the GHKL family. They have been implicated in transcriptional repression of genes and transposons, and higher order organization of DNA within the nucleus. Morc antibodies are ideal for researchers interested in Epigenetics, Cancer, and Cell cycle research.

**Synonyms:** rabbit anti-Morc3 Antibody, MORC family CW-type zinc finger protein 3, Protein microorchidia, Morc antibody, Nuclear matrix protein 2, Zinc finger CW-type coiled-coil domain protein 3, ZCWCC3, NXP2

**Note:** Anti-Morc3 Antibody is tested for use in Western Blot and suitable for ChIP and IF. Specific conditions for reactivity should be optimized by the end user. Expect a band approximately 107.1 kDa in size corresponding Morc3 by western blotting in the appropriate cell lysate or extract.

### Product images:



Western Blot of Rabbit anti-Morc3 antibody. Lane 1: Human embryonic stem cell. Lane 2: Human embryonic stem cell. Lane 3: C-Flag Mouse embryonic stem cell. Lane 4: C-Flag Mouse embryonic stem cell doxycycline induced. Load: 35  $\mu$ g per lane. Primary antibody: hMorc3 antibody at 1:1000-1:5000 for overnight at 4°C. Secondary antibody: IRDye800™ rabbit secondary antibody at 1:10,000 for 45 min at RT. Block: 5% BLOTTO overnight at 4°C. Predicted/Observed size: 107kDa/ ~170kDa. Other band(s): sumoylated Morc run higher.