

Product datasheet for **TA396534**

Rabbit Polyclonal Antibody

Product data:

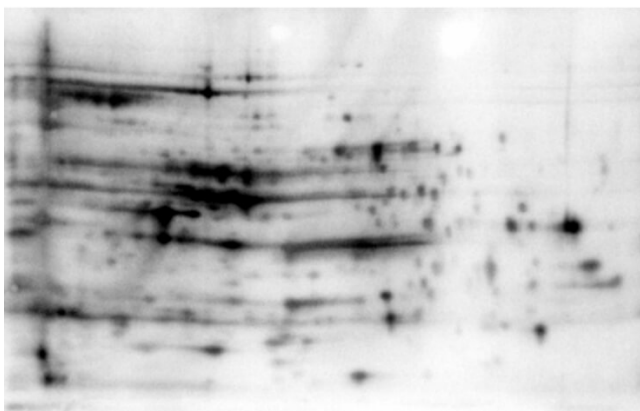
Product Type:	Primary Antibodies
Applications:	ELISA, WB
Recommended Dilution:	WB: 1:500 - 1:1000 ELISA: 1:1000 - 1:2000
Reactivity:	Escherichia coli
Host:	Rabbit
Clonality:	Polyclonal
Immunogen:	Anti-Host Cell Proteins Antibody was prepared blending antibodies that have been separately developed by repeated immunizations with a mixture of high molecular weight (HMW) and a mixture of low molecular weight (LMW) proteins from E.Coli (BL21).
Specificity:	E.coli HCP Antibody is directed against high molecular weight and low molecular weight E.coli Host Cell Proteins. This whole rabbit antiserum was prepared by delipidation and defibrination followed by the addition of buffer salts and preservative. The anti-sera reactivity is directed against E.coli Host Cell Proteins. Cross-reactivity with other species is likely but has not been determined. Reactivity against homologues from other sources is not known.
Formulation:	0.02 M Potassium Phosphate, 0.15 M Sodium Chloride, pH 7.2
Concentration:	77.5 mg/mL - lot specific
Conjugation:	Unconjugated
Storage:	Store Host Cell Proteins Antibody at -20° C prior to opening. Aliquot contents and freeze at -20° C or below for extended storage. Avoid cycles of freezing and thawing. Centrifuge product if not completely clear after standing at room temperature. This product is stable for several weeks at 4° C as an undiluted liquid. Dilute only prior to immediate use.
Stability:	Expiration date is one (1) year from date of receipt.



[View online »](#)

- Background:** Anti-Host Cell Proteins Antibody recognizes high and low molecular weight protein fractions from E.coli. This antibody has been validated by 2D electrophoresis western blot to assure highest possible coverage of E.coli HCP. Host Cell Proteins are process-related impurities derived from a host cell expression system that may be present in trace amounts in a final drug substance. HCP Antibodies are used to detect impurities in biologically-based therapeutics. Detecting impurities often unseen by 1-D electrophoresis, a 2D electrophoresis western blot analysis delivers more complete insight into the immunocoverage of protein components of the host cell lysate.
- Synonyms:** rabbit anti-E.Coli Host Cell Protein antibody, HCP antibody, Anti-HCP, Anti-Host Cell Protein, ECP antibody, Anti-ECP, 2D detection antibody
- Note:** Anti-Host Cell Proteins Antibody detects over 300 E.coli proteins and has been tested in ELISA, 2D-Page and Western blot.

Product images:



2D Western Blot of anti-E.coli HCP antibody.
Load: 35 µg Total HCP. pH: 5-8. Primary antibody: Rabbit anti-HCP antibody at 1:200 for overnight at 4°C. Secondary antibody: Goat anti-rabbit secondary antibody at 1:10,000 for 30 min at RT. Block: MB-070 for 1 hour at RT.