

Product datasheet for **TA396528S**

Pecam1 Rabbit Polyclonal Antibody

Product data:

Product Type:	Primary Antibodies
Applications:	ELISA, IHC, WB
Recommended Dilution:	WB: 1:500 IHC: 4µg/mL ELISA: 1:20,000
Reactivity:	Human, Mouse
Host:	Rabbit
Clonality:	Polyclonal
Immunogen:	This antibody was prepared from whole rabbit serum produced by repeated immunizations with a synthetic peptide corresponding to the C-terminal domain of rat CD31 protein.
Specificity:	CD31 PECAM1 antibody is directed against rat CD31 protein. The product is delipidated and defibrinated antiserum. A BLAST analysis was used to suggest cross-reactivity with CD31 from rat, human, and mouse based on a 100% homology with the immunizing sequence. Reactivity against homologues from other sources is not known.
Formulation:	0.02 M Potassium Phosphate, 0.15 M Sodium Chloride, pH 7.2
Concentration:	90 mg/mL - lot specific
Conjugation:	Unconjugated
Storage:	Store vial at -20° C or below prior to opening. This vial contains a relatively low volume of reagent (25 µL). To minimize loss of volume dilute 1:10 by adding 225 µL of the buffer stated above directly to the vial. Recap, mix thoroughly and briefly centrifuge to collect the volume at the bottom of the vial. Use this intermediate dilution when calculating final dilutions as recommended below. Store the vial at -20°C or below after dilution. Avoid cycles of freezing and thawing.
Stability:	Expiration date is one (1) year from date of receipt.
Gene Name:	platelet and endothelial cell adhesion molecule 1
Database Link:	Q3SWT0



[View online »](#)

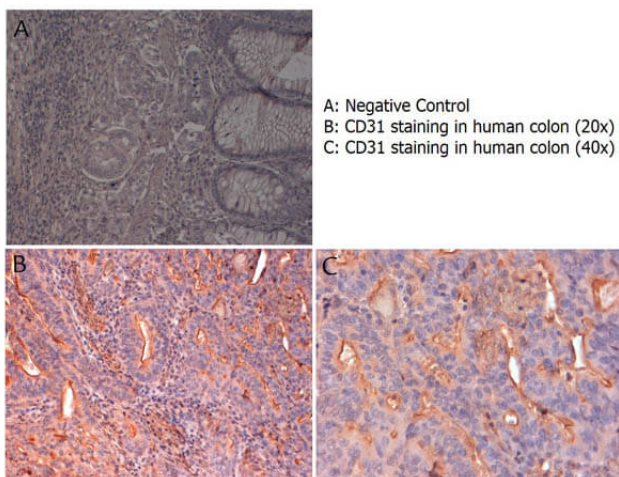
Background:

Anti-CD31 antibody was designed, produced, and validated as part of the Joy Cappel Young Investigator Award (JCYIA). CD31 (PECAM-1) is a 130 kDa platelet endothelial cell adhesion molecule encoded by the PECAM1 gene found on chromosome 17 in humans. CD31 is expressed on platelets, monocytes, neutrophils, and some types of T-cells, and makes up a large portion of endothelial cell intercellular junctions. CD31 plays a key role in modulation of integrin-mediated cell adhesion, leukocyte transendothelial migration, angiogenesis, apoptosis and macrophage phagocytosis. CD31 is also expressed in certain tumors, including epithelioid hemangioendothelioma, epithelioid sarcoma-like hemangioendothelioma, other vascular tumors, histiocytic malignancies, and plasmacytomas. Anti-CD31 is ideal for researchers interested in Stem Cell Research, Epigenetics, and Cell-cycle Regulation research.

Synonyms:

rabbit anti-CD31 Antibody, rabbit anti-PECAM-1 antibody, Platelet endothelial cell adhesion molecule, PECAM-1, EndoCAM, GPIIA¹, PECA1, CD31 Antibody, PECAM1 Antibody, CD31/PECAM1 Antibody

Note: CD31 antibody has been tested for use in ELISA, immunohistochemistry, and by western blot. Specific conditions for reactivity should be optimized by the end user. Expect a band approximately 80 kDa in size corresponding to CD31 protein by western blotting in the appropriate stimulated tissue or cell lysate or extract.

Product images:

Immunohistochemistry with anti-CD31 antibody showing CD31 staining of vascular endothelium in human colon at 20x and 40x (B & C). Formalin fixed/paraffin embedded sections were subjected to heat induced epitope retrieval (HIER) at pH 6.2 and then incubated with rabbit anti-human CD31 antibody at 4.0 µg/ml for 60 minutes. The reaction was developed using MACH 1 universal HRP polymer detection system and visualized with 3'3-diamino-benzidine substrate (DAB).