

Product datasheet for **TA396526S**

VhH Antibody

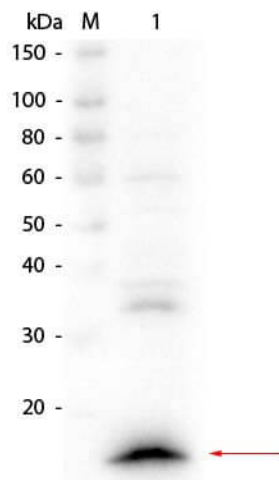
Product data:

Product Type:	Secondary Antibodies
Product Name:	VhH Antibody
Applications:	ELISA, WB
Recommended Dilution:	WB: 1:1,000-1:5,000 ELISA: 1:10,000-1:50,000
Host:	Rabbit
Immunogen:	This antibody was prepared from whole rabbit serum produced by repeated immunizations with a VhH camelid domain protein.
Formulation:	0.02 M Potassium Phosphate, 0.15 M Sodium Chloride, pH 7.2
Concentration:	80mg/mL - lot specific
Conjugation:	Unconjugated
Storage:	Store vial at -20° C or below prior to opening. This vial contains a relatively low volume of reagent (25 µL). To minimize loss of volume dilute 1:10 by adding 225 µL of the buffer stated above directly to the vial. Recap, mix thoroughly and briefly centrifuge to collect the volume at the bottom of the vial. Use this intermediate dilution when calculating final dilutions as recommended below. Store the vial at -20°C or below after dilution. Avoid cycles of freezing and thawing.
Note:	Anti-VhH antibody has been tested by ELISA and Western Blot. Specific conditions for reactivity should be optimized by the end user. Some cross-reactivity to E.coli proteins may be observed.

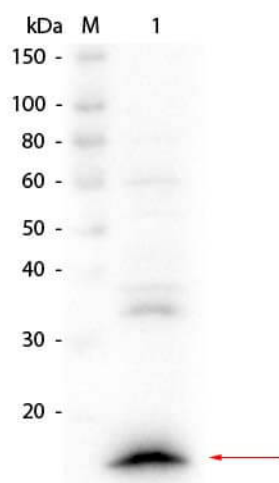


[View online »](#)

Product images:



Western Blot of Rabbit anti-VhH Antibody. Lane 1: HeLa whole cell lysate spiked with VhH single-domain antibody. Load: 10 μ g lysate with 25 ng VhH. Primary antibody: Rabbit anti-VhH Antibody at 1:1,000 o/n at 4°C. Secondary antibody: HRP Gt-a-Rb IgG (p/n 611-103-122) at 1:40,000 for 30 min at RT. Block: MB-070 for 30 min at RT. Predicted/Observed size: 15 kDa, 15 kDa for VhH.



Western Blot of Rabbit anti-VhH Antibody. Lane 1: HeLa whole cell lysate spiked with VhH single-domain antibody. Load: 10 μ g lysate with 25 ng VhH. Primary antibody: Rabbit anti-VhH Antibody at 1:1,000 o/n at 4°C. Secondary antibody: HRP Gt-a-Rb IgG (p/n 611-103-122) at 1:40,000 for 30 min at RT. Block: MB-070 for 30 min at RT. Predicted/Observed size: 15 kDa, 15 kDa for VhH.