

## Product datasheet for **TA392966**

### COX4 (COX4I1) Mouse Polyclonal Antibody

#### Product data:

Product Type:	Primary Antibodies
Applications:	WB
Recommended Dilution:	WB: 1:500~1:2000
Reactivity:	Human, Mouse, Rat
Host:	Mouse
Isotype:	IgG
Clonality:	Polyclonal
Immunogen:	Recombinant full length Human COX4.
Specificity:	COX4 (5B9) monoclonal antibody detects endogenous levels of COX4 and does not cross-react with related proteins.
Formulation:	1mg/ml in PBS with 0.02% sodium azide, 50% glycerol, pH7.2
Concentration:	1mg/ml
Conjugation:	Unconjugated
Storage:	Store at 4°C short term. Aliquot and store at -20°C long term. Avoid freeze-thaw cycles.
Stability:	1 year
Predicted Protein Size:	~ 20 kDa
Gene Name:	cytochrome c oxidase subunit 4I1
Database Link:	<a href="#">Entrez Gene 1327 Human P13073</a>



[View online »](#)

**Background:**

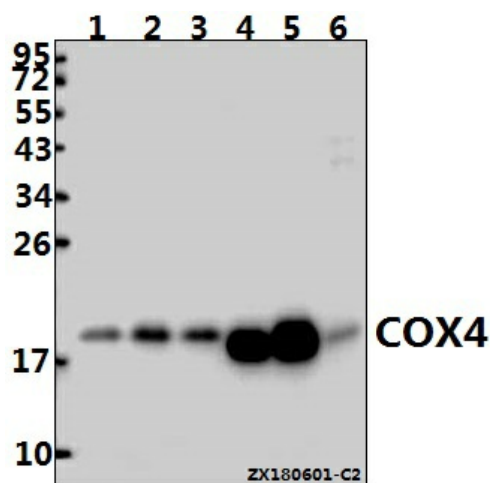
Cytochrome c oxidase (COX) is the terminal enzyme of the mitochondrial respiratory chain. It is a multi-subunit enzyme complex that couples the transfer of electrons from cytochrome c to molecular oxygen and contributes to a proton electrochemical gradient across the inner mitochondrial membrane. The complex consists of 13 mitochondrial- and nuclear-encoded subunits. The mitochondrially-encoded subunits perform the electron transfer and proton pumping activities. The functions of the nuclear-encoded subunits are unknown but they may play a role in the regulation and assembly of the complex. This gene encodes the nuclear-encoded subunit IV isoform 1 of the human mitochondrial respiratory chain enzyme. It is located at the 3' of the NOC4 (neighbor of COX4) gene in a head-to-head orientation, and shares a promoter with it.

**Synonyms:**

COX4; COX4I1; COX IV-1; Cytochrome c oxidase polypeptide IV; Cytochrome c oxidase subunit 4 isoform 1, mitochondrial; Cytochrome c oxidase subunit IV isoform 1

**Note:**

For research use only, not for use in diagnostic procedure.

**Product images:**

Western blot (WB) analysis of COX4 (5B9) mAb at 1:2000 dilution Lane1:SGC7901 whole cell lysate(20ug) Lane2:HCT116 whole cell lysate(20ug) Lane3:Panc1 whole cell lysate(20ug) Lane4:The Heart tissue lysate of Mouse(20ug) Lane5:The Heart tissue lysate of Rat(20ug) Lane6:H9C2 whole cell lysate(40ug)