

Product datasheet for **TA392964S**

NFE2L3 Rabbit Polyclonal Antibody

Product data:

Product Type:	Primary Antibodies
Applications:	WB
Recommended Dilution:	WB: 1:500~1:1000
Reactivity:	Human, Mouse, Rat
Host:	Rabbit
Isotype:	IgG
Clonality:	Polyclonal
Immunogen:	Synthetic peptide, corresponding to amino acids 500-520 of Human Nrf3.
Specificity:	Nrf3 (D530) polyclonal antibody detects endogenous levels of Nrf3 protein.
Formulation:	Rabbit IgG, 1mg/ml in PBS with 0.02% sodium azide, 50% glycerol, pH7.2
Concentration:	1mg/ml
Conjugation:	Unconjugated
Storage:	Store at 4°C short term. Aliquot and store at -20°C long term. Avoid freeze-thaw cycles.
Stability:	1 year
Predicted Protein Size:	~ 76 kDa
Gene Name:	nuclear factor, erythroid 2 like 3
Database Link:	Entrez Gene 9603 Human Q9Y4A8
Background:	Nrf3 (nuclear factor (erythroid-derived 2)-like 3, NFE2L3, NF-E2-related factor 3, NRF3) is a transcription factor that influences placental gene expression and development. Nrf3 contains a Cap'n'collar (CNC)-type basic leucine zipper (bZIP) domain, and belongs to the CNC gene family. CNC genes play important roles in development, differentiation, oncogenesis, and stress signaling. Nrf3 protein is detectable in primary placental cytotrophoblasts. The human choriocarcinoma cell lines BeWo and JAR from trophoblastic tumors of the placenta express Nrf3 transcripts. Nrf3/MAFG heterodimers recognize nuclear factor-erythroid 2/Maf recognition element-type DNA-binding motifs. Keratinocyte growth factor (KGF)-regulates Nrf3-dependent gene expression during cutaneous wound repair.

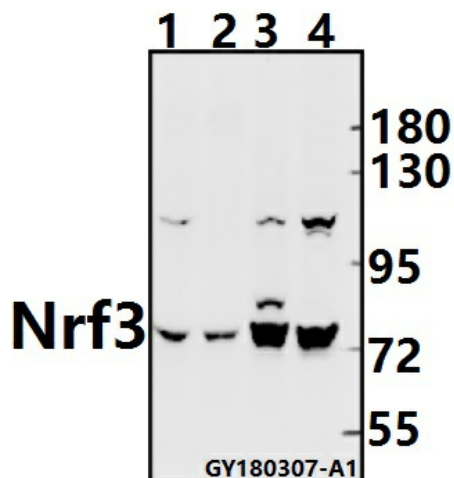


[View online »](#)

Synonyms: NF-E2-related factor 3; NFE2-related factor 3; NFE2L3; NRF3; Nuclear factor, erythroid derived 2, like 3; Nuclear factor erythroid 2-related factor 3

Note: For research use only, not for use in diagnostic procedure.

Product images:



Western blot (WB) analysis of Nrf3 (D530) pAb at 1:500 dilution Lane1:CT26 whole cell lysate(40ug) Lane2:The Uterus tissue lysate of Rat(40ug) Lane3:A375 whole cell lysate(40ug) Lane4:PC3 whole cell lysate(40ug)