

Product datasheet for **TA392963S**

RALY Rabbit Polyclonal Antibody

Product data:

Product Type:	Primary Antibodies
Applications:	WB
Recommended Dilution:	WB: 1:500~1:1000
Reactivity:	Human, Mouse, Rat
Host:	Rabbit
Isotype:	IgG
Clonality:	Polyclonal
Immunogen:	Synthetic peptide, corresponding to amino acids 70-120 of Human Raly.
Specificity:	Raly (R103) polyclonal antibody detects endogenous levels of Raly protein.
Formulation:	Rabbit IgG, 1mg/ml in PBS with 0.02% sodium azide, 50% glycerol, pH7.2
Concentration:	1mg/ml
Conjugation:	Unconjugated
Storage:	Store at 4°C short term. Aliquot and store at -20°C long term. Avoid freeze-thaw cycles.
Stability:	1 year
Predicted Protein Size:	~ 32 kDa
Gene Name:	RALY heterogeneous nuclear ribonucleoprotein
Database Link:	Entrez Gene 22913 Human Q9UKM9
Background:	Raly, also known as hnRNP associated with lethal yellow homolog, autoantigen p542 or heterogeneous nuclear ribonucleoprotein C-like 2 (hnRNPL2), is a 306 amino acid protein belonging to the RRM HNRPC family. Localized to the nucleus, Raly is thought to be an RNA-binding protein involved in pre-mRNA splicing. Phosphorylated upon DNA damage, Raly has been found to be a subunit of the spliceosome C complex. Raly is also an autoantigen that is crossreactive with an Epstein-Barr virus protein. Raly is expressed at higher levels in pancreas, liver, skeletal muscle, lung, brain, heart and kidney with lower levels found in placenta. Produced by alternative splicing, Raly is expressed as two isoforms.

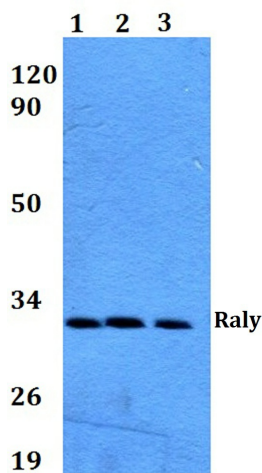


[View online »](#)

Synonyms: Autoantigen p542; Heterogeneous nuclear ribonucleoprotein C-like 2; hnRNP associated with lethal yellow protein homolog; hnRNP core protein C-like 2; HNRPCL2; P542; RALY; RNA-binding protein Raly

Note: For research use only, not for use in diagnostic procedure.

Product images:



Western blot (WB) analysis of Raly (R103) polyclonal antibody at 1:500 dilution
Lane1:HEK293T whole cell lysate Lane2:Raw264.7 whole cell lysate Lane3:PC12 whole cell lysate