

## Product datasheet for **TA392963**

### **RALY Rabbit Polyclonal Antibody**

#### **Product data:**

<b>Product Type:</b>	Primary Antibodies
<b>Applications:</b>	WB
<b>Recommended Dilution:</b>	WB: 1:500~1:1000
<b>Reactivity:</b>	Human, Mouse, Rat
<b>Host:</b>	Rabbit
<b>Isotype:</b>	IgG
<b>Clonality:</b>	Polyclonal
<b>Immunogen:</b>	Synthetic peptide, corresponding to amino acids 70-120 of Human Raly.
<b>Specificity:</b>	Raly (R103) polyclonal antibody detects endogenous levels of Raly protein.
<b>Formulation:</b>	Rabbit IgG, 1mg/ml in PBS with 0.02% sodium azide, 50% glycerol, pH7.2
<b>Concentration:</b>	1mg/ml
<b>Conjugation:</b>	Unconjugated
<b>Storage:</b>	Store at 4°C short term. Aliquot and store at -20°C long term. Avoid freeze-thaw cycles.
<b>Stability:</b>	1 year
<b>Predicted Protein Size:</b>	~ 32 kDa
<b>Gene Name:</b>	RALY heterogeneous nuclear ribonucleoprotein
<b>Database Link:</b>	<a href="#">Entrez Gene 22913 Human Q9UKM9</a>
<b>Background:</b>	Raly, also known as hnRNP associated with lethal yellow homolog, autoantigen p542 or heterogeneous nuclear ribonucleoprotein C-like 2 (hnRNPL2), is a 306 amino acid protein belonging to the RRM HNRPC family. Localized to the nucleus, Raly is thought to be an RNA-binding protein involved in pre-mRNA splicing. Phosphorylated upon DNA damage, Raly has been found to be a subunit of the spliceosome C complex. Raly is also an autoantigen that is crossreactive with an Epstein-Barr virus protein. Raly is expressed at higher levels in pancreas, liver, skeletal muscle, lung, brain, heart and kidney with lower levels found in placenta. Produced by alternative splicing, Raly is expressed as two isoforms.

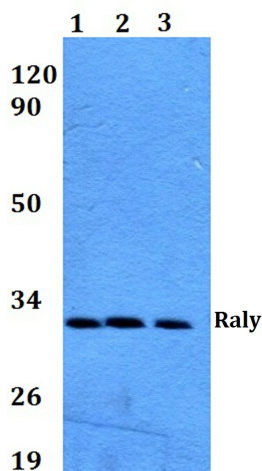


[View online »](#)

**Synonyms:** Autoantigen p542; Heterogeneous nuclear ribonucleoprotein C-like 2; hnRNP associated with lethal yellow protein homolog; hnRNP core protein C-like 2; HNRPCL2; P542; RALY; RNA-binding protein Raly

**Note:** For research use only, not for use in diagnostic procedure.

**Product images:**



Western blot (WB) analysis of Raly (R103) polyclonal antibody at 1:500 dilution  
Lane1:HEK293T whole cell lysate Lane2:Raw264.7 whole cell lysate Lane3:PC12 whole cell lysate