

## Product datasheet for **TA392960**

### LEF1 Rabbit Polyclonal Antibody

#### Product data:

Product Type:	Primary Antibodies
Applications:	WB
Recommended Dilution:	WB: 1:500~1:1000
Reactivity:	Human, Rat
Host:	Rabbit
Isotype:	IgG
Clonality:	Polyclonal
Immunogen:	Synthetic phosphopeptide derived from human LEF-1 around the phosphorylation site of Serine 42
Specificity:	p-LEF-1 (S42) pAb detects endogenous levels of LEF-1 protein only when phosphorylated at Ser42.
Formulation:	Rabbit IgG, 1mg/ml in PBS with 0.02% sodium azide, 50% glycerol, pH7.2
Concentration:	1mg/ml
Conjugation:	Unconjugated
Storage:	Store at 4°C short term. Aliquot and store at -20°C long term. Avoid freeze-thaw cycles.
Stability:	1 year
Predicted Protein Size:	~ 53 kDa
Gene Name:	lymphoid enhancer binding factor 1
Database Link:	<a href="#">Entrez Gene 51176 Human Q9UJU2</a>
Background:	This gene encodes a transcription factor belonging to a family of proteins that share homology with the high mobility group protein-1. The protein encoded by this gene can bind to a functionally important site in the T-cell receptor-alpha enhancer, thereby conferring maximal enhancer activity. This transcription factor is involved in the Wnt signaling pathway, and it may function in hair cell differentiation and follicle morphogenesis. Mutations in this gene have been found in somatic sebaceous tumors. This gene has also been linked to other cancers, including androgen-independent prostate cancer. Alternative splicing results in multiple transcript variants.

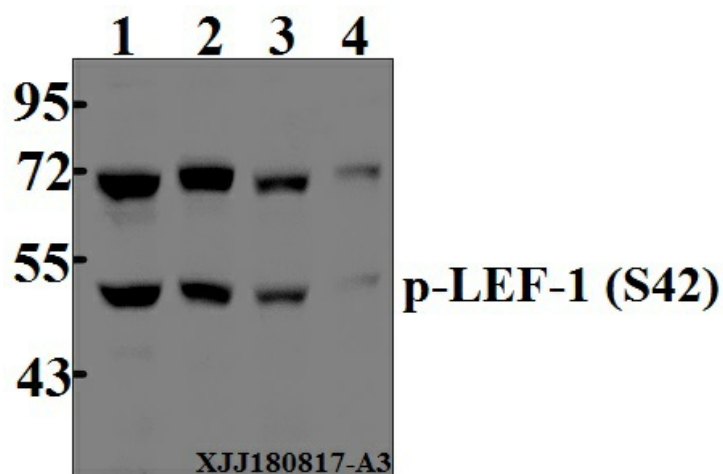


[View online »](#)

Synonyms: LEF-1; TCF1ALPHA; TCF7L3; TCF10

Note: For research use only, not for use in diagnostic procedure.

**Product images:**



Western blot (WB) analysis of p-LEF-1 (S42) pAb at 1:500 dilution Lane1:HCT116 whole cell lysate(40µg) Lane2:LOVO whole cell lysate(40µg) Lane3:DLD whole cell lysate(40µg) Lane4:The Thymus lysate of Rat(40µg)