

Product datasheet for **TA392958M**

KAT5 Rabbit Polyclonal Antibody

Product data:

Product Type:	Primary Antibodies
Applications:	WB
Recommended Dilution:	WB: 1:500~1:1000
Reactivity:	Human, Mouse, Rat
Host:	Rabbit
Isotype:	IgG
Clonality:	Polyclonal
Immunogen:	Synthetic phosphopeptide derived from human TIP60 around the phosphorylation site of Serine 86
Specificity:	TIP60 (phospho-S86) polyclonal antibody detects endogenous levels of TIP60 protein only when phosphorylated at Ser86.
Formulation:	Rabbit IgG, 1mg/ml in PBS with 0.02% sodium azide, 50% glycerol, pH7.2
Concentration:	1mg/ml
Conjugation:	Unconjugated
Storage:	Store at 4°C short term. Aliquot and store at -20°C long term. Avoid freeze-thaw cycles.
Stability:	1 year
Predicted Protein Size:	~ 60 kDa
Gene Name:	lysine acetyltransferase 5
Database Link:	Entrez Gene 10524 Human Q92993



[View online »](#)

Background:

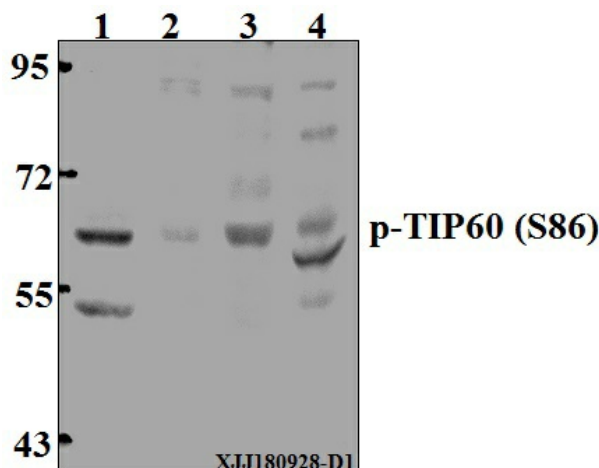
The MOZ gene was initially isolated as a consequence of two variant translocations that were identified in a distinct subtype of acute myeloid leukemias and resulted in the formation of MOZ fusion proteins. These fusions involve the HAT domain of MOZ with the activation domain of either transcriptional co-activator protein TIF2/GRIP1 or CBP, and lead to enhanced transcriptional activation by a mechanism involving aberrant histone acetylation. Additional MOZ-related proteins, including MORF (MOZrelated factor) and TIP60 (TAT-interacting proteins 60), share significant similarities with MOZ including the putative HAT domain. TIP60 was originally identified as a co-activator for the HIV TAT protein and also functions as a nuclear hormone receptor co-activator that enhances ligand dependent steroid receptor-mediated transactivation involving the androgen, estrogen and progesterone receptors.

Synonyms:

60 kDa Tat-interactive protein; cPLA(2)-interacting protein; Histone acetyltransferase HTATIP; Histone acetyltransferase KAT5; HIV-1 Tat interactive protein; HTATIP; KAT5; Lysine acetyltransferase 5; TIP60; Tip60

Note:

For research use only, not for use in diagnostic procedure.

Product images:


Western blot (WB) analysis of TIP60 (phospho-S86) polyclonal antibody at 1:500 dilution
 Lane1:The Kidney tissue lysate of Rat(40µg)
 Lane2:A549 whole cell lysate(40µg)
 Lane3:HCT116 whole cell lysate(40µg) Lane4:CT-26 whole cell lysate(40µg)