

Product datasheet for **TA392955S**

Casein Kinase 1 alpha (CSNK1A1) Rabbit Polyclonal Antibody

Product data:

| | |
|-------------------------|---|
| Product Type: | Primary Antibodies |
| Applications: | WB |
| Recommended Dilution: | WB: 1:500~1:1000 |
| Reactivity: | Human, Mouse, Rat |
| Host: | Rabbit |
| Isotype: | IgG |
| Clonality: | Polyclonal |
| Immunogen: | Synthetic phosphopeptide derived from human Casein Kinase Ia around the phosphorylation site of Tyrosine 321 |
| Specificity: | p-Casein Kinase Ia (Y321) pAb detects endogenous levels of Casein Kinase Ia protein only when phosphorylated at Tyr321. |
| Formulation: | Rabbit IgG, 1mg/ml in PBS with 0.02% sodium azide, 50% glycerol, pH7.2 |
| Concentration: | 1mg/ml |
| Conjugation: | Unconjugated |
| Storage: | Store at 4°C short term. Aliquot and store at -20°C long term. Avoid freeze-thaw cycles. |
| Stability: | 1 year |
| Predicted Protein Size: | ~ 34 kDa |
| Gene Name: | casein kinase 1 alpha 1 |
| Database Link: | Entrez Gene 1452 Human P48729 |



[View online »](#)

Background:

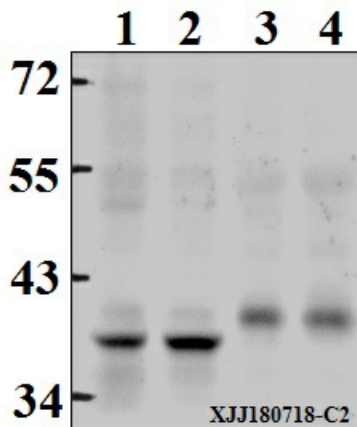
Casein kinase I (also designated CKI) and casein kinase II (also designated CKII) compose a family of serine/threonine protein kinases which are present in all eukaryotes examined to date. CKI family members, which include CKI α , β , γ , ϵ and δ , have been implicated in the control of cytoplasmic and nuclear processes, including DNA replication and repair. CKII is usually expressed as a tetrameric complex consisting of either an $\alpha_2\beta_2$ or an $\alpha\alpha'\beta_2$ structure. The α catalytic subunit is stimulated by the β regulatory subunit, which undergoes autophosphorylation. CKII activity is high in the cytosol and nucleus of proliferating and differentiating cells. CKII is known to phosphorylate more than 100 different substrates including nuclear oncoproteins, transcription factors and enzymes involved in DNA metabolism.

Synonyms:

Casein kinase I isoform alpha; CK-I α ; CK1; CKI-alpha; CKI- α ; CK I α ; CKI α ; CSNK1A1

Note:

For research use only, not for use in diagnostic procedure.

Product images:

p-Casein Kinase I α (Y321)

Western blot (WB) analysis of p-Casein Kinase I α (Y321) pAb at 1:500 dilution Lane1:HEK293T whole cell lysate(40 μ g) Lane2:L02 whole cell lysate(40 μ g) Lane3:The Brain tissue lysate of Mouse(40 μ g) Lane4:The Brain tissue lysate of Rat(40 μ g)