

Product datasheet for **TA392953S**

CDK5 Rabbit Polyclonal Antibody

Product data:

Product Type:	Primary Antibodies
Applications:	WB
Recommended Dilution:	WB: 1:500~1:1000
Reactivity:	Human, Mouse, Rat
Host:	Rabbit
Isotype:	IgG
Clonality:	Polyclonal
Immunogen:	Synthetic phosphopeptide derived from human Cdk5 around the phosphorylation site of Tyrosine15.
Specificity:	Cdk5 (phospho-Y15) polyclonal antibody detects endogenous levels of Cdk5 protein only when phosphorylated at Tyr15.
Formulation:	Rabbit IgG, 1mg/ml in PBS with 0.02% sodium azide, 50% glycerol, pH7.2
Concentration:	1mg/ml
Conjugation:	Unconjugated
Storage:	Store at 4°C short term. Aliquot and store at -20°C long term. Avoid freeze-thaw cycles.
Stability:	1 year
Predicted Protein Size:	~ 33 kDa
Gene Name:	cyclin-dependent kinase 5
Database Link:	Entrez Gene 1020 Human Q00535



[View online »](#)

Background:

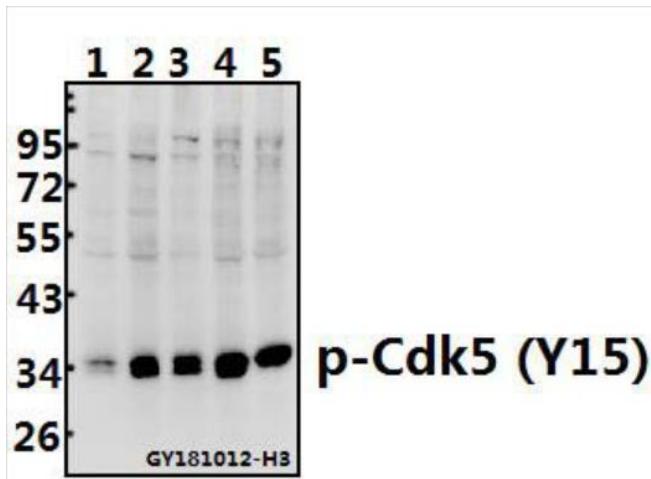
Cell cycle progression is controlled in part by a family of cyclin proteins and cyclin dependent kinases (Cdk). Cdk proteins work in concert with the cyclins to phosphorylate key substrates involved in each phase of cell cycle progression. Another family of proteins, Cdk inhibitors, also plays a role in regulating cell cycle by binding to cyclin-Cdk complexes and modulating their activity. Several Cdk proteins have been identified, including Cdk2-Cdk8, PCTAIRE-1-3, PITALRE and PITSLRE. Cdk5 is thought to be involved in the G1/S transition of the cell cycle and is highly expressed in mature neurons. Activity of Cdk5 increases significantly during neuronal differentiation. Cdk5 has been postulated to be a neurofilament or Tau protein kinase, based on its ability to phosphorylate these proteins in vitro.

Synonyms:

CDK5; CDKN5; Cell division protein kinase 5; Cyclin-dependent-like kinase 5; Serine/threonine-protein kinase PSSALRE; Tau protein kinase II catalytic subunit; TPKII catalytic subunit

Note:

For research use only, not for use in diagnostic procedure.

Product images:

Western blot (WB) analysis of Cdk5 (phospho-Y15) polyclonal antibody at 1:500 dilution
Lane 1: U-87MG whole cell lysate (40ug)
Lane 2: A2780 whole cell lysate (40ug)
Lane 3: SK-OVCAR3 whole cell lysate (40ug)
Lane 4: C6 whole cell lysate (40ug)
Lane 5: BV2 whole cell lysate (40ug)