

Product datasheet for **TA392952S**

IL10RA Rabbit Polyclonal Antibody

Product data:

Product Type:	Primary Antibodies
Applications:	WB
Recommended Dilution:	WB: 1:500~1:1000
Reactivity:	Human, Mouse, Rat
Host:	Rabbit
Isotype:	IgG
Clonality:	Polyclonal
Immunogen:	Synthetic phosphopeptide derived from human IL-10R α around the phosphorylation site of Tyrosine 496
Specificity:	p-IL-10R α (Y496) pAb detects endogenous levels of IL-10R α protein only when phosphorylated at Tyr496.
Formulation:	Rabbit IgG, 1mg/ml in PBS with 0.02% sodium azide, 50% glycerol, pH7.2
Concentration:	1mg/ml
Conjugation:	Unconjugated
Storage:	Store at 4°C short term. Aliquot and store at -20°C long term. Avoid freeze-thaw cycles.
Stability:	1 year
Predicted Protein Size:	~ 70 kDa
Gene Name:	interleukin 10 receptor subunit alpha
Database Link:	Entrez Gene 3587 Human Q13651



[View online »](#)

Background:

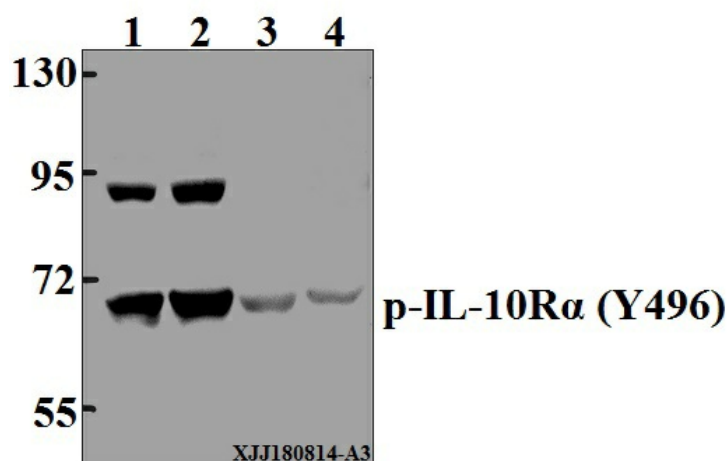
The IL-10 receptor, IL-10R, is a member of the class II subgroup of the cytokine receptor family and exhibits structural similarity to the interferon receptor. IL-10R is expressed in B cells and T helper cells, as well as in LPS-induced mouse fibroblasts. Overall, mouse IL-10R and human IL-10R share 60% sequence identity at the protein level. Stimulation with IL-10 leads to phosphorylation of JAK1 and Tyk 2 tyrosine kinases. The activated kinases phosphorylate the two tyrosine residues (Tyr 446 and Tyr 496) in the cytoplasmic domain of IL-10R α . The phosphorylation of these two residues are required for proper function of IL-10R and activation of IL-10E1 signaling. IL-10R β is ubiquitously expressed and, in addition to forming the IL-10 heterodimeric receptor, it forms a heterodimeric receptor with an IL-22R subunit and an IL-28R subunit. IL-10R is constitutively expressed on human natural killer (NK) cells and the direct binding of IL-10 potentiates cytokine production by human NK cells.

Synonyms:

CDw210a antigen; IL-10R-A; IL-10R1; IL10R; IL10RA

Note:

For research use only, not for use in diagnostic procedure.

Product images:

Western blot (WB) analysis of p-IL-10R α (Y496) pAb at 1:500 dilution Lane1: Myla2059 whole cell lysate(40 μ g) Lane2: K562 whole cell lysate(40 μ g) Lane3: RAW264.7 whole cell lysate(40 μ g) Lane4: C6 whole cell lysate(40 μ g)