

Product datasheet for **TA392949S**

Cytokeratin 18 (KRT18) Rabbit Polyclonal Antibody

Product data:

Product Type:	Primary Antibodies
Applications:	WB
Recommended Dilution:	WB: 1:500~1:1000
Reactivity:	Human
Host:	Rabbit
Isotype:	IgG
Clonality:	Polyclonal
Immunogen:	Synthetic phosphopeptide derived from human Cytokeratin 18 around the phosphorylation site of Serine 52
Specificity:	p-Cytokeratin 18 (S52) polyclonal antibody detects endogenous levels of Cytokeratin 18 protein only when phosphorylated at Ser52.
Formulation:	Rabbit IgG, 1mg/ml in PBS with 0.02% sodium azide, 50% glycerol, pH7.2
Concentration:	1mg/ml
Conjugation:	Unconjugated
Storage:	Store at 4°C short term. Aliquot and store at -20°C long term. Avoid freeze-thaw cycles.
Stability:	1 year
Predicted Protein Size:	~ 46 kDa
Gene Name:	keratin 18
Database Link:	Entrez Gene 3875 Human P05783
Background:	Keratins (cytokeratins) are intermediate filament proteins that are mainly expressed in epithelial cells. Keratin heterodimers composed of an acidic keratin (or type I keratin, keratins 9 to 23) and a basic keratin (or type II keratin, keratins 1 to 8) assemble to form filaments. Keratin isoforms demonstrate tissue and differentiation-specific profiles that make them useful as research biomarkers. Research studies have shown that mutations in keratin genes are associated with skin disorders, liver and pancreatic diseases, and inflammatory intestinal diseases.

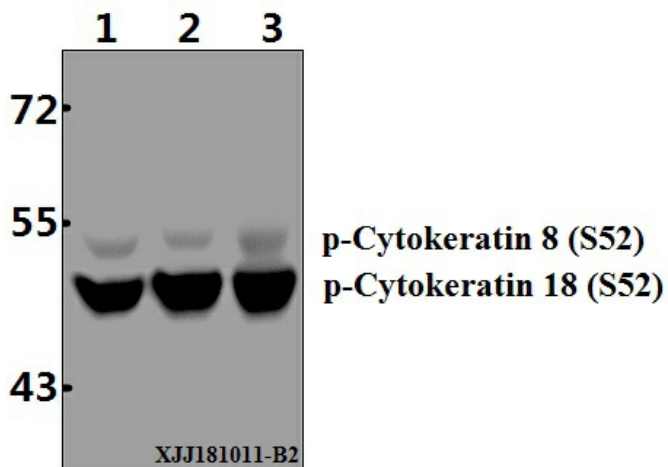


[View online »](#)

Synonyms: Cell proliferation-inducing gene 46 protein; CK-18; CYK18; Cytokeratin-18; K18; Keratin, type I cytoskeletal 18; Keratin-18; KRT18; PIG46

Note: For research use only, not for use in diagnostic procedure.

Product images:



Western blot (WB) analysis of p-Cytokeratin 18 (S52) polyclonal antibody at 1:500 dilution Lane1:HepG2 whole cell lysate(40µg) Lane2:L02 whole cell lysate(40µg) Lane3:A549 whole cell lysate(40µg)