

## Product datasheet for **TA392948**

### SMAD1 Rabbit Polyclonal Antibody

#### Product data:

Product Type:	Primary Antibodies
Applications:	WB
Recommended Dilution:	WB: 1:500~1:1000 IHC: 1:50~1:200
Reactivity:	Human, Mouse, Rat
Host:	Rabbit
Isotype:	IgG
Clonality:	Polyclonal
Immunogen:	Synthetic phosphopeptide derived from human Smad1 around the phosphorylation site of Serine 465.
Specificity:	p-Smad1 (S465) polyclonal antibody detects endogenous levels of Smad1 protein only when phosphorylated at Ser465.
Formulation:	Rabbit IgG, 1mg/ml in PBS with 0.02% sodium azide, 50% glycerol, pH7.2
Concentration:	1mg/ml
Conjugation:	Unconjugated
Storage:	Store at 4°C short term. Aliquot and store at -20°C long term. Avoid freeze-thaw cycles.
Stability:	1 year
Predicted Protein Size:	~ 60 kDa
Gene Name:	SMAD family member 1
Database Link:	<a href="#">Entrez Gene 4086 Human Q15797</a>
Background:	Smad proteins, the mammalian homologs of the Drosophila Mothers against dpp (Mad) have been implicated as downstream effectors of TGFβ/BMP signaling. Smad1 (also designated Madr1 or JV4-1), Smad5 and mammalian Smad8 (also designated Smad9 or MadH6) are effectors of BMP2 and BMP4 function while Smad2 (also designated Madr2 or JV18-1) and Smad3 are involved in TGFβ and activin-mediated growth modulation. Smad4 (also designated DPC4) has been shown to mediate all of the above activities through interaction with various Smad family members. Smad6 and Smad7 regulate the response to activin/TGFβ signaling by interfering with TGFβ-mediated phosphorylation of other Smad family members.



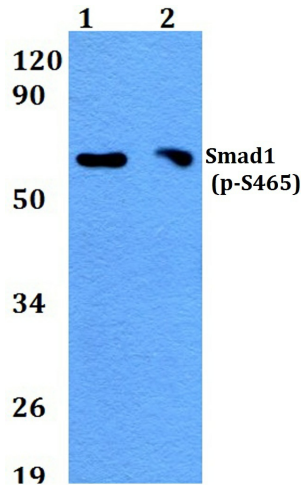
[View online »](#)

**Synonyms:**

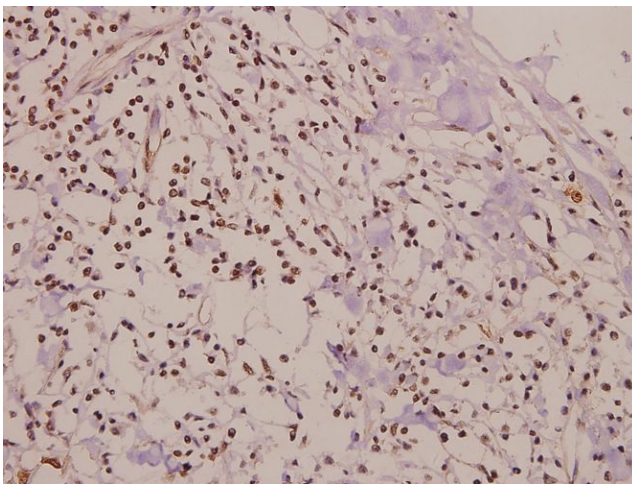
BSP-1; BSP1; hSMAD1; JV4-1; Mad-related protein 1; MADH1; MAD homolog 1; MADR1; Mothers against decapentaplegic homolog 1; Mothers against DPP homolog 1; SMAD 1; SMAD1; Smad1; SMAD family member 1; Transforming growth factor-beta-signaling protein 1

**Note:**

For research use only, not for use in diagnostic procedure.

**Product images:**


Western blot (WB) analysis of p-Smad1 (S465) pAb at 1:500 dilution Lane1:A549 whole cell lysate(40ug) Lane2:A549 treated with UV for 5 minutes then repair for 1 hour whole cell lysate(40ug) Lane3:A549 treated with UV for 5 minutes then repair for 3 hours whole cell lysate(40ug) Lane4:A549 treated with UV for 5 minutes then repair for 6 hours whole cell lysate(40ug) Lane5:A549 treated with UV for 5 minutes then repair for 24 hours whole cell lysate(40ug) Lane6:The Uterus tissue lysate of Mouse(40ug) Lane7:The Uterus tissue lysate of Rat(40ug)



Immunohistochemistry (IHC) analyzes of p-Smad1 (S465) pAb in paraffin-embedded human colorectal carcinoma tissue at 1:50.