

## Product datasheet for **TA392947M**

### IL13 receptor alpha 1 (IL13RA1) Rabbit Polyclonal Antibody

#### Product data:

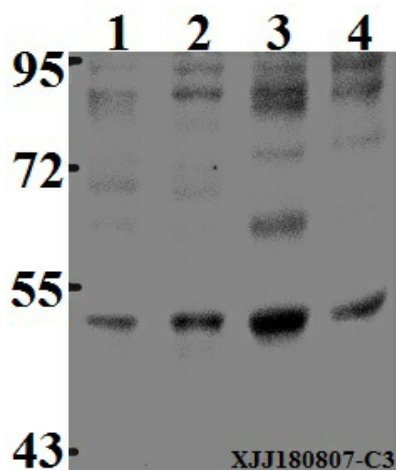
Product Type:	Primary Antibodies
Applications:	WB
Recommended Dilution:	WB: 1:500~1:1000
Reactivity:	Human, Mouse, Rat
Host:	Rabbit
Isotype:	IgG
Clonality:	Polyclonal
Immunogen:	Synthetic phosphopeptide derived from human IL-13R $\alpha$ 1 around the phosphorylation site of Tyrosine 405.
Specificity:	IL-13R $\alpha$ 1 (phospho-Y405) polyclonal antibody detects endogenous levels of IL-13R $\alpha$ 1 protein when phosphorylated at Tyr405.
Formulation:	Rabbit IgG, 1mg/ml in PBS with 0.02% sodium azide, 50% glycerol, pH7.2
Concentration:	1mg/ml
Conjugation:	Unconjugated
Storage:	Store at 4°C short term. Aliquot and store at -20°C long term. Avoid freeze-thaw cycles.
Stability:	1 year
Predicted Protein Size:	~ 49 kDa
Gene Name:	interleukin 13 receptor subunit alpha 1
Database Link:	<a href="#">Entrez Gene 3597 Human P78552</a>
Background:	The protein encoded by this gene is a subunit of the interleukin 13 receptor. This subunit forms a receptor complex with IL4 receptor alpha, a subunit shared by IL13 and IL4 receptors. This subunit serves as a primary IL13-binding subunit of the IL13 receptor, and may also be a component of IL4 receptors. This protein has been shown to bind tyrosine kinase TYK2, and thus may mediate the signaling processes that lead to the activation of JAK1, STAT3 and STAT6 induced by IL13 and IL4.

[View online »](#)

**Synonyms:** Cancer/testis antigen 19; CD213a1; CT19; IL-13 receptor subunit alpha-1; IL-13R-alpha-1; IL-13RA1; IL-13R subunit alpha-1; IL13R; IL13RA; IL13RA1; Interleukin-13 receptor subunit alpha-1

**Note:** For research use only, not for use in diagnostic procedure.

**Product images:**



**p-IL-13R $\alpha$ 1 (Y405)**

Western blot (WB) analysis of p-IL-13R $\alpha$ 1 (Y405) pAb at 1:500 dilution Lane1:SK-OVCA3 whole cell lysate(40 $\mu$ g) Lane2:LO2 whole cell lysate(40 $\mu$ g) Lane3:RAW264.7 whole cell lysate(40 $\mu$ g) Lane4:C6 whole cell lysate(40 $\mu$ g)