

Product datasheet for **TA392942S**

Ku70 (XRCC6) Rabbit Polyclonal Antibody

Product data:

Product Type:	Primary Antibodies
Applications:	WB
Recommended Dilution:	WB: 1:500~1:1000
Reactivity:	Human
Host:	Rabbit
Isotype:	IgG
Clonality:	Polyclonal
Immunogen:	Synthetic peptide derived from human Ku-70 around the phosphorylation site of S5.
Specificity:	Ku-70 (phospho-S5) polyclonal antibody detects endogenous levels of Ku-70 protein around the phosphorylation site of S5.
Formulation:	Rabbit IgG, 1mg/ml in PBS with 0.02% sodium azide, 50% glycerol, pH7.2
Concentration:	1mg/ml
Conjugation:	Unconjugated
Storage:	Store at 4°C short term. Aliquot and store at -20°C long term. Avoid freeze-thaw cycles.
Stability:	1 year
Predicted Protein Size:	~ 70 kDa
Gene Name:	X-ray repair complementing defective repair in Chinese hamster cells 6
Database Link:	Entrez Gene 2547 Human P12956
Background:	The Ku protein is localized in the nucleus and is composed of subunits referred to as Ku-70 (or p70) and Ku-86 (or p86), which is also known by the synonym Ku-80 (or p80). Ku was first described as an autoantigen to which antibodies were produced in a patient with scleroderma-polymyositis overlap syndrome, and was later found in the sera of patients with other rheumatic diseases. Both subunits of the Ku protein have been cloned, and a number of functions have been proposed for Ku, including cell signaling, DNA replication and transcriptional activation.

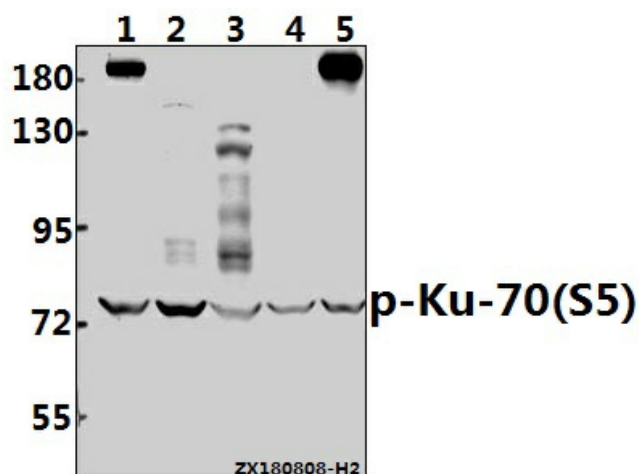


[View online »](#)

Synonyms: 5'-deoxyribose-5-phosphate lyase Ku70; 5'-dRP lyase Ku70; 70 kDa subunit of Ku antigen; ATP-dependent DNA helicase 2 subunit 1; ATP-dependent DNA helicase II 70 kDa subunit; Chinese hamster cells 6; CTC75; CTCBF; CTC box-binding factor 75 kDa subunit; DNA repair protein XRCC6; G22P1; Ku70; Lupus Ku autoantigen protein p70; Thyroid-lupus autoantigen; TLA; X-ray repair complementing defective repair in; X-ray repair cross-complementing protein 6; XRCC6

Note: For research use only, not for use in diagnostic procedure.

Product images:



Western blot (WB) analysis of p-Ku-70 (S5) pAb at 1:500 dilution Lane1:A549 whole cell lysate(40ug) Lane2:A2780 whole cell lysate(40ug) Lane3:HEK293T whole cell lysate(40ug) Lane4:A375 whole cell lysate(40ug) Lane5:MCF-7 whole cell lysate(40ug)