

Product datasheet for **TA392940S**

EIF4G1 Rabbit Polyclonal Antibody

Product data:

Product Type:	Primary Antibodies
Applications:	WB
Recommended Dilution:	WB: 1:500~1:1000
Reactivity:	Human
Host:	Rabbit
Isotype:	IgG
Clonality:	Polyclonal
Immunogen:	A synthetic peptide corresponding to residues in Human EIF4G1 around the phosphorylation site of S1148.
Specificity:	EIF4G1 (phospho-S1148) polyclonal antibody detects endogenous levels of EIF4G1 protein around the phosphorylation site of S1148.
Formulation:	Rabbit IgG, 1mg/ml in PBS with 0.02% sodium azide, 50% glycerol, pH7.2
Concentration:	1mg/ml
Conjugation:	Unconjugated
Storage:	Store at 4°C short term. Aliquot and store at -20°C long term. Avoid freeze-thaw cycles.
Stability:	1 year
Predicted Protein Size:	~ 175 kDa
Gene Name:	eukaryotic translation initiation factor 4 gamma 1
Database Link:	Entrez Gene 1981 Human Q04637

Background: The initiation of protein synthesis in eukaryotic cells is regulated by interactions between protein initiation factors and RNA molecules. The eukaryotic initiation complex eIF4F exists in vitro as a trimeric complex of eIF4G, eIF4E, and eIF4A. Together, the complex allows ribosome binding to mRNA by inducing the unwinding of mRNA secondary structures. eIF4E binds to the mRNA "cap" during an early step in the initiation of protein synthesis. eIF4A acts as an ATP-dependent RNA helicase. eIF4G acts as a bridge between eIF4E, eIF4A, and the eIF3 complex .

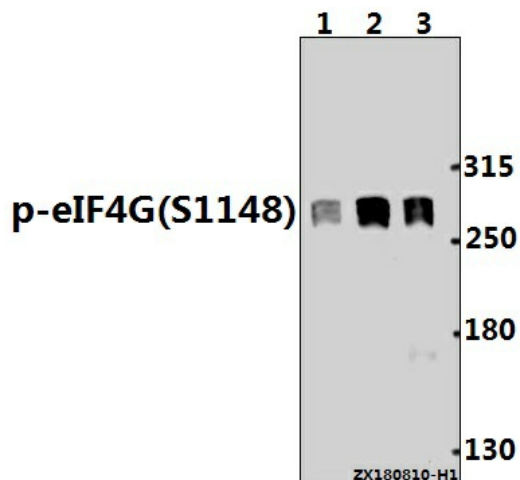


[View online »](#)

Synonyms: eIF-4-gamma 1; eIF-4G 1; eIF-4G1; EIF4F; EIF4G; EIF4G1; EIF4GI; Eukaryotic translation initiation factor 4 gamma 1; p220

Note: For research use only, not for use in diagnostic procedure.

Product images:



Western blot (WB) analysis of EIF4G1 (phospho-S1148) polyclonal antibody at 1:500 dilution
Lane1:HEK293T whole cell lysate(40ug)
Lane2:HepG2 whole cell lysate(40ug) Lane3:MCF-7 whole cell lysate(30ug)