

Product datasheet for **TA392939M**

DDX5 Rabbit Polyclonal Antibody

Product data:

Product Type:	Primary Antibodies
Applications:	WB
Recommended Dilution:	WB: 1:500~1:1000
Reactivity:	Human, Mouse, Rat
Host:	Rabbit
Isotype:	IgG
Clonality:	Polyclonal
Immunogen:	Synthetic peptide derived from human p68 RNA Helicase around the phosphorylation site of Y593.
Specificity:	p68 RNA Helicase (phospho-Y593) polyclonal antibody detects endogenous levels of p68 RNA Helicase protein only when phosphorylated at Tyr593.
Formulation:	Rabbit IgG, 1mg/ml in PBS with 0.02% sodium azide, 50% glycerol, pH7.2
Concentration:	1mg/ml
Conjugation:	Unconjugated
Storage:	Store at 4°C short term. Aliquot and store at -20°C long term. Avoid freeze-thaw cycles.
Stability:	1 year
Predicted Protein Size:	~ 68 kDa
Gene Name:	DEAD-box helicase 5
Database Link:	Entrez Gene 1655 Human P17844

[View online »](#)

Background:

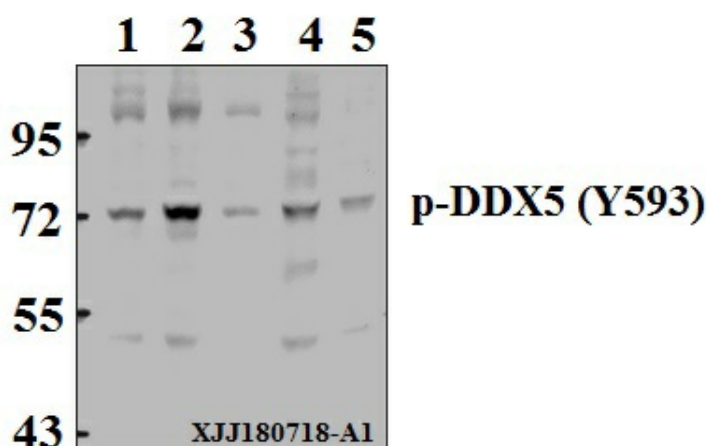
p68 RNA Helicase is a nuclear protein that exhibits RNA-dependent ATPase activity. Phosphorylation by protein kinase C inhibits p68 RNA Helicase activity. p68 RNA Helicase appears to play a role in organ differentiation during development. Furthermore, p68 RNA Helicase is expressed in early neural development and in various mesodermal tissues in a number of different chordate embryos. At the cellular level, the expression levels of p68 RNA Helicase increase in serum-induced quiescent cell lines. p68 RNA Helicase may function as a coactivator for estrogen receptor α . Additionally, p68 RNA Helicase associates with transcriptional coactivators CBP and p300. p68 RNA Helicase localizes to the nucleus under normal conditions. During late telophase, p68 RNA Helicase and fibrillarin co-localize to nascent nucleoli. p68 RNA Helicase may function as a heterodimer with p72 RNA Helicase.

Synonyms:

68kD); ATP dependent RNA helicase DDX5; DDX 5; DDX5; Ddx5; DEAD (Asp Glu Ala Asp) box helicase 5; DEAD (Asp Glu Ala Asp) box polypeptide 5; DEAD/H (Asp-Glu-Ala-Asp/His) box polypeptide 5 (RNA helicase 68kDa); DEAD/H (Asp Glu Ala Asp/His) box polypeptide 5; DEAD/H (Asp Glu Ala Asp/His) box polypeptide 5 (RNA helicase; DEAD/H box-5 (RNA helicase 68kD); DEAD box 5; DEAD box protein 5; DKFZp686J01190; G17P1; HELR; HLR 1; HLR1; HUMP68; P68; p68 RNA he

Note:

For research use only, not for use in diagnostic procedure.

Product images:


Western blot (WB) analysis of p68 RNA Helicase (phospho-Y593) polyclonal antibody at 1:500 dilution Lane1:MCF-7 whole cell lysate(40µg) Lane2:A375 whole cell lysate(40µg) Lane3:U-87MG whole cell lysate(40µg) Lane4:CT-26 whole cell lysate(40µg) Lane5:C6 whole cell lysate(40µg)