

Product datasheet for **TA392938S**

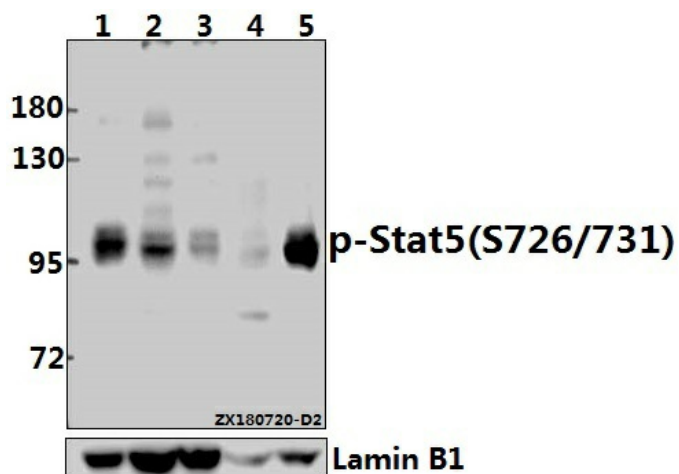
Stat5 (phospho-S726/731) Polyclonal Antibody

Product data:

Product Type:	Primary Antibodies
Applications:	WB
Recommended Dilution:	WB: 1:500~1:1000 IHC: 1:50~1:200
Reactivity:	Human, Mouse, Rat
Host:	Rabbit
Isotype:	IgG
Clonality:	Polyclonal
Immunogen:	Synthetic peptide derived from human stat5a around the phosphorylation site of S726.
Specificity:	Stat5 (phospho-S726/731) polyclonal antibody detects endogenous levels of Stat5a protein only when phosphorylated at Ser726 and/or Stat5b protein only when phosphorylated at Ser731.
Formulation:	Rabbit IgG, 1mg/ml in PBS with 0.02% sodium azide, 50% glycerol, pH7.2
Concentration:	1mg/ml
Conjugation:	Unconjugated
Storage:	Store at 4°C short term. Aliquot and store at -20°C long term. Avoid freeze-thaw cycles.
Stability:	1 year
Predicted Protein Size:	~ 90 kDa
Database Link:	P42229/P51692
Background:	Stat 5a protein is a transcription factor activated by hormone and cytokines. Two highly related, but distinct Stat 5 genes (Stat 5a and Stat 5b) were identified in mouse. The amino acid sequences of Stat 5a and Stat 5b show 96% sequence similarity, and both proteins are co expressed in most tissues of both virgin and lactating mice. However, differential accumulation of Stat 5a and Stat 5b mRNA has been reported for both muscle and mammary tissue. Stat 5a is critically involved in a variety of physiological functions, including reproduction, lactation, immune function and somatic growth.
Synonyms:	Signal transducer and activator of transcription 5A; Signal transducer and activator of transcription 5B; STAT5; STAT5A; STAT5B
Note:	For research use only, not for use in diagnostic procedure.


[View online »](#)

Product images:



Western blot (WB) analysis of p-Stat5 (S726/731) pAb at 1:500 dilution Lane1:L02 whole cell lysate(30ug) Lane2:HepG2 whole cell lysate(40ug) Lane3:MCF-7 whole cell lysate(40ug) Lane4:AML-12 whole cell lysate(40ug) Lane5:PC12 whole cell lysate(40ug)