

Product datasheet for **TA392936S**

p23 (PTGES3) Rabbit Polyclonal Antibody

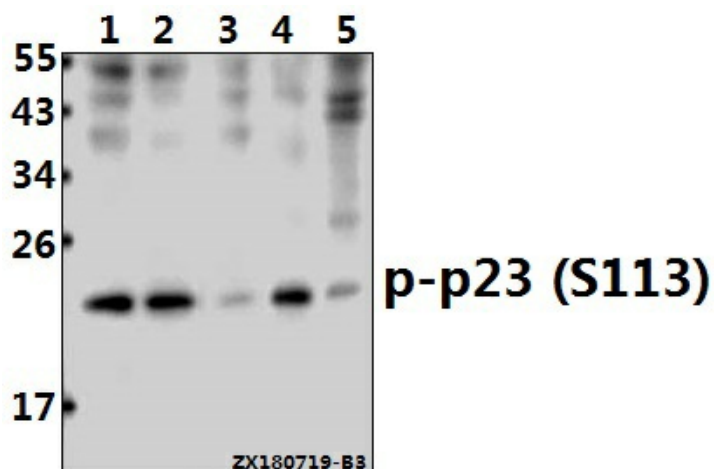
Product data:

Product Type:	Primary Antibodies
Applications:	WB
Recommended Dilution:	WB: 1:500~1:1000
Reactivity:	Human, Mouse, Rat
Host:	Rabbit
Isotype:	IgG
Clonality:	Polyclonal
Immunogen:	Synthetic peptide derived from human TEBP around the phosphorylation site of S133.
Specificity:	TEBP (phospho-S133) polyclonal antibody detects endogenous levels of TEBP protein only when phosphorylated at Ser133.
Formulation:	Rabbit IgG, 1mg/ml in PBS with 0.02% sodium azide, 50% glycerol, pH7.2
Concentration:	1mg/ml
Conjugation:	Unconjugated
Storage:	Store at 4°C short term. Aliquot and store at -20°C long term. Avoid freeze-thaw cycles.
Stability:	1 year
Predicted Protein Size:	~ 18 kDa
Gene Name:	prostaglandin E synthase 3
Database Link:	Entrez Gene 10728 Human Q15185
Background:	Molecular chaperone that localizes to genomic response elements in a hormone-dependent manner and disrupts receptor-mediated transcriptional activation, by promoting disassembly of transcriptional regulatory complexes.
Synonyms:	Cpges; Cytosolic prostaglandin E2 synthase; Hsp90 co-chaperone; P23; Progesterone receptor complex p23; Prostaglandin E synthase 3; PTGES3; TEBP; Telomerase-binding protein p23
Note:	For research use only, not for use in diagnostic procedure.



[View online »](#)

Product images:



Western blot (WB) analysis of TEBP (phospho-S133) pAb at 1:500 dilution Lane1:A2780 whole cell lysate(40ug) Lane2:Hela whole cell lysate(40ug) Lane3:PC3 whole cell lysate(40ug) Lane4:The Testis tissue lysate of Mouse(40ug) Lane5:The Ovary tissue lysate of Rat(40ug)