

Product datasheet for **TA392935M**

PKC alpha (PRKCA) Rabbit Polyclonal Antibody

Product data:

Product Type:	Primary Antibodies
Applications:	WB
Recommended Dilution:	WB: 1:500~1:1000 IHC: 1:50~1:200
Reactivity:	Human, Mouse, Rat
Host:	Rabbit
Isotype:	IgG
Clonality:	Polyclonal
Immunogen:	Synthetic phosphopeptide derived from human PKC α around the phosphorylation site of Threonine 505.
Specificity:	p-PKC α (T505) polyclonal antibody detects endogenous levels of PKC α protein only when phosphorylated at Thr505.
Formulation:	Rabbit IgG, 1mg/ml in PBS with 0.02% sodium azide, 50% glycerol, pH7.2
Concentration:	1mg/ml
Conjugation:	Unconjugated
Storage:	Store at 4°C short term. Aliquot and store at -20°C long term. Avoid freeze-thaw cycles.
Stability:	1 year
Predicted Protein Size:	~ 80 kDa
Gene Name:	protein kinase C alpha
Database Link:	Entrez Gene 5578 Human P17252



[View online »](#)

Background:

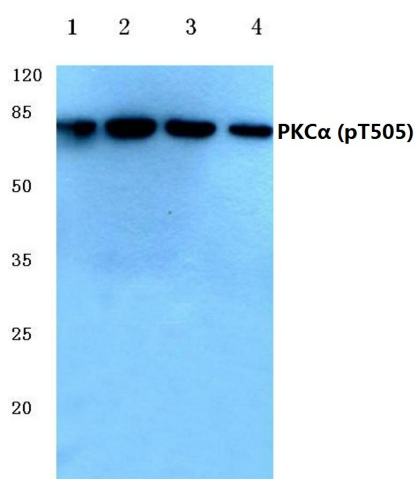
Members of the protein kinase C (PKC) family play a key regulatory role in a variety of cellular functions including cell growth and differentiation, gene expression, hormone secretion and membrane function. PKCs were originally identified as serine/threonine protein kinases whose activity was dependent on calcium and phospholipids. Diacylglycerols (DAG) and tumor promoting phorbol esters bind to and activate PKC. PKCs can be subdivided into at least two major classes including conventional (c) PKC isoforms (α , β I, β II and γ) and novel (n) PKC isoforms (δ , ϵ , ζ , η and θ). Patterns of expression for each PKC isoform differ among tissues and PKC family members exhibit clear differences in their cofactor dependencies. For instance, the kinase activities of nPKC δ and ϵ are independent of Ca^{2+} .

Synonyms:

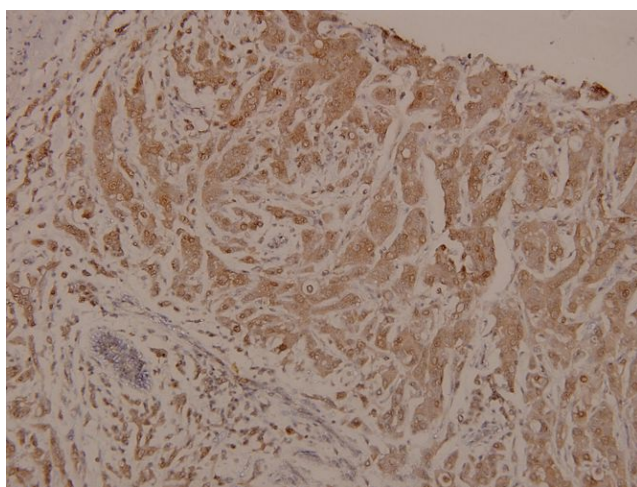
PKC-A; PKC-alpha; PKCA; PRKACA; PRKCA; Protein kinase C alpha type

Note:

For research use only, not for use in diagnostic procedure.

Product images:


Western blot (WB) analysis of p-PKC α (T505) pAb at 1:500 dilution Lane1:Hela whole cell lysate(10ug) Lane2:The Kidney tissue lysate of Mouse(40ug) Lane3:The Heart tissue lysate of Rat(20ug)



Immunohistochemistry (IHC) analyzes of p-PKC α (T505) pAb in paraffin-embedded human breast carcinoma tissue at 1:100.